

Recombinant Human CHID1 Protein (20-393 aa), His-tagged

Cat. No. CHID1-1978H Lot. No. (See product label)

SPECIFICATION

Product Overview Recombinant Human CHID1 Protein (20-393 aa) is produced by Yeast expression system. This protein is fused with a 6xHis tag at the N-terminal. Research Area: Tags & Cell Markers. Protein Description: Full Length of Mature Protein.

Species Human

Source Yeast

ProteinLength 20-393 aa

Description Saccharide- and LPS-binding protein with possible roles in pathogen sensing and endotoxin neutralization. Ligand-binding specificity relates to the length of the oligosaccharides, with preference for chitotetraose (in vitro).

Form Tris-based buffer, 50% glycerol

Molecular Mass 44.8 kDa

AA Sequence

```

TLSKSDAKKAASKTLLEKSQFSDKPVQDRGLVVTDLKAESVVLEHRSYCSAKARDR
HFAGDVLGYVTPWNSHGVDVTKVFGSKFTQISPVWLQLKRRGREMFEVTGLHDVD
QGWMRAVRKHAKGLHIVPRLLFEDWTYDDFRNVLDSEDEIEELSKTVVQVAKNQHF
DGFVVEVWNQLLSQKRVGLIHMLTHLAEALHQARLLALLVIPPAITPGTDQLGMFTHK
EFEQLAPVLDGFSMLTYDYSTAHPGPAPLSWVRACVQLDPKSKWRSKILLGLN
FYGMDYATSKDAREPVVGARYIQTLKDHPRMVWDSQASEHFFEYKKSRSRGRHVV
FYPTLKSLLQVRLELARELGVGVSIVELGQGLDYFYDLL
    
```

 Tel: 1-631-559-9269 1-516-512-3133

 Email: info@creative-biomart.com  Fax: 1-631-938-8127

 45-1 Ramsey Road, Shirley, NY 11967, USA

Purity	> 90% as determined by SDS-PAGE.
Notes	Repeated freezing and thawing is not recommended. Store working aliquots at 4 centigrade for up to one week.
Storage	The shelf life is related to many factors, storage state, buffer ingredients, storage temperature and the stability of the protein itself. Generally, the shelf life of liquid form is 6 months at -20 centigrade/-80 centigrade. The shelf life of lyophilized form is 12 months at -20 centigrade/-80 centigrade.
Concentration	A hardcopy of COA with reconstitution instruction is sent along with the products.

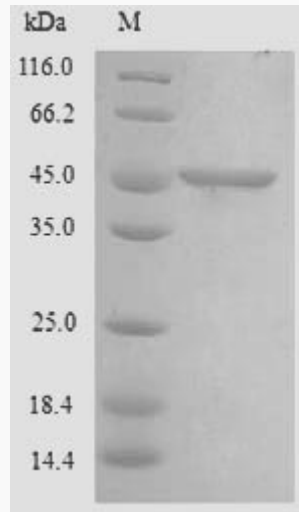
GENE INFORMATION

Gene Name	CHID1 chitinase domain containing 1 [Homo sapiens]
Official Symbol	CHID1
Synonyms	CHID1; FLJ42707; MGC3234; GL008; SI-CLP;
Gene ID	66005
mRNA Refseq	NM_001142674
Protein Refseq	NP_001136146
UniProt ID	Q9BWS9

 Tel: 1-631-559-9269 1-516-512-3133

 Email: info@creative-biomart.com  Fax: 1-631-938-8127

 45-1 Ramsey Road, Shirley, NY 11967, USA



(Tris-Glycine gel) Discontinuous SDS-PAGE (reduced) with 5% enrichment gel and 15% separation gel.

 Tel: 1-631-559-9269 1-516-512-3133

 Email: info@creative-biomart.com  Fax: 1-631-938-8127

 45-1 Ramsey Road, Shirley, NY 11967, USA