

Recombinant Human CHIT1 Protein, GST-Tagged

Cat. No. CHIT1-1238H **Lot. No.** (See product label)

SPECIFICATION

Product Overview	Human CHIT1 full-length ORF (AAI03696.1, 1 a.a. - 466 a.a.) recombinant protein with GST-tag at N-terminal.
Species	Human
Source	Wheat Germ
Description	Chitotriosidase is secreted by activated human macrophages and is markedly elevated in plasma of Gaucher disease patients. The expression of chitotriosidase occurs only at a late stage of differentiation of monocytes to activated macrophages in culture. Human macrophages can synthesize a functional chitotriosidase, a highly conserved enzyme with a strongly regulated expression. This enzyme may play a role in the degradation of chitin-containing pathogens. Several alternatively spliced transcript variants have been described for this gene. [provided by RefSeq, Jan 2012]
Molecular Mass	78.1 kDa
AA Sequence	MVRSVAWAGFMVLLMIPWGSAAKLVCYFTNWAQYRQGEARFLPKDLDPSTLCTHLIY AFAGMTNHQLSTTEWNETLYQEFNGLKMKMNPCLKTLLAIGGWNFSTQKFTDMVAT ANNRQTFVNSAIRFLRKYSFDGLDLWEYPGSQGSPAVDKERFTTLVQDLANAFQQ EAQTSGKERLLLLSAAVPAGQTYVDAGYEVDKIAQNLDVNLDMAYDFHGSWEKVTGH NSPLYKRQEESGAAASLNVDAAVQQWLQKGT PASKLILGMPTYGRSFTLASSSDTR VGAPATGSGTPGPFTKEGGMLAYYEVC SWKGATKQRIQDQKVPIYIFRDNQWVGFD DVESFKTKVSYLKQKGLGGAMVWALDLDLDFAGFSCNQGRYPLIQTLRQELSLPYLP

 Tel: 1-631-559-9269 1-516-512-3133

 Email: info@creative-biomart.com  Fax: 1-631-938-8127

 45-1 Ramsey Road, Shirley, NY 11967, USA



SGTPELEVPKPGQPSEPEHGPSPGQDTFCQGKADGLYPNPRERSSFYSCAGGRLF
QQSCPTGLVFSNSCKCCTWN

Applications
Enzyme-linked Immunoabsorbent Assay
Western Blot (Recombinant protein)
Antibody Production
Protein Array

Storage Store at -80 centigrade. Aliquot to avoid repeated freezing and thawing.

Storage Buffer 50 mM Tris-HCl, 10 mM reduced Glutathione, pH=8.0 in the elution buffer.

GENE INFORMATION

Gene Name CHIT1 chitinase 1 (chitotriosidase) [Homo sapiens]

Official Symbol CHIT1

Synonyms CHIT1; chitinase 1 (chitotriosidase); chitotriosidase-1; CHI3; CHIT; chitinase-1; plasma methylumbelliferyl tetra-N-acetylchitotetraoside hydrolase; CHITD; FLJ00314; MGC125322;

Gene ID 1118

mRNA Refseq NM_001256125

Protein Refseq NP_001243054

MIM 600031

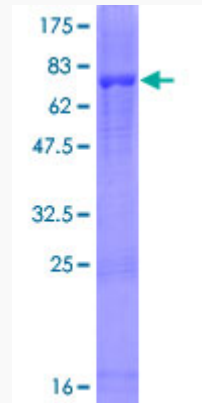
UniProt ID Q13231

Tel: 1-631-559-9269 1-516-512-3133

Email: info@creative-biomart.com Fax: 1-631-938-8127

45-1 Ramsey Road, Shirley, NY 11967, USA

**Quality Control
Testing**



12.5% SDS-PAGE Stained with Coomassie Blue.

 Tel: 1-631-559-9269 1-516-512-3133

 Email: info@creative-biomart.com  Fax: 1-631-938-8127

 45-1 Ramsey Road, Shirley, NY 11967, USA