

Active Recombinant Human CHIT1 protein, His-tagged

Cat. No. CHIT1-1257H Lot. No. (See product label)

SPECIFICATION

Product Overview	Recombinant Human Chitinase-1/CHIT1 Protein is produced by HEK293 expression system. The target protein is expressed with sequence (Ala22-Asn466) of human CHIT1 (Accession #NP_003456) fused with a 6×His tag at the C-terminus.
Species	Human
Source	HEK293
ProteinLength	Ala22-Asn466
Form	Lyophilized from a 0.22 µm filtered solution of PBS, pH 7.4.
Bio-activity	Measured by its ability to cleave 4-Methylumbelliferyl-beta -D-N,N',N''-triacetylchitotriose (4-MU-TACT). The specific activity is >43571 pmol/min/µg.
Molecular Mass	52 kDa
Endotoxin	< 0.01 EU/µg of the protein by LAL method.
Purity	> 95% by SDS-PAGE.
Storage	Store the lyophilized protein at -20°C to -80 °C for long term. After reconstitution, the protein solution is stable at -20 °C for 3 months, at 2-8 °C for up to 1 week.

 Tel: 1-631-559-9269 1-516-512-3133

 Email: info@creative-biomart.com  Fax: 1-631-938-8127

 45-1 Ramsey Road, Shirley, NY 11967, USA

Reconstitution Reconstitute to a concentration of 0.1-0.5 mg/mL in sterile distilled water.

GENE INFORMATION

Gene Name CHIT1 chitinase 1 (chitotriosidase) [Homo sapiens]

Official Symbol CHIT1

Synonyms CHIT1; chitinase 1 (chitotriosidase); chitotriosidase-1; CHI3; CHIT; chitinase-1; plasma methylumbelliferyl tetra-N-acetylchitotetraoside hydrolase; CHITD; FLJ00314; MGC125322;

Gene ID 1118

mRNA Refseq NM_001256125

Protein Refseq NP_001243054

MIM 600031

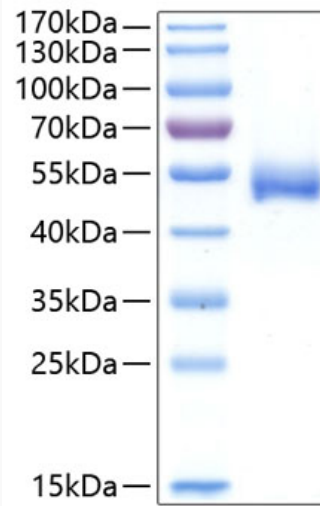
UniProt ID Q13231

 Tel: 1-631-559-9269 1-516-512-3133

 Email: info@creative-biomart.com  Fax: 1-631-938-8127

 45-1 Ramsey Road, Shirley, NY 11967, USA

SDS-PAGE



 Tel: 1-631-559-9269 1-516-512-3133

 Email: info@creative-biomart.com  Fax: 1-631-938-8127

 45-1 Ramsey Road, Shirley, NY 11967, USA