

Recombinant Human CHIT1 Protein (Ala193-Asn466), N-His tagged

Cat. No. CHIT1-1718H Lot. No. (See product label)

SPECIFICATION

Product Overview	Recombinant human CHIT1 (Ala193-Asn466) fused with N-His tag was expressed in E. coli.
Species	Human
Source	E.coli
ProteinLength	Ala193-Asn466
Form	Lyophilized powder/frozen liquid
Molecular Mass	32.32 kDa
Purity	>90% as determined by SDS-PAGE
Notes	For research use only.
Storage	Use a manual defrost freezer and avoid repeated freeze thaw cycles. Store at 2 to 8 centigrade for one week. Store at -20 to -80 centigrade for twelve months from the date of receipt.
Storage Buffer	0.01M PBS, pH 7.4, 0.02% NLS
Reconstitution	Reconstitute in sterile water for a stock solution.

 Tel: 1-631-559-9269 1-516-512-3133

 Email: info@creative-biomart.com  Fax: 1-631-938-8127

 45-1 Ramsey Road, Shirley, NY 11967, USA

Shipping

They are shipped out with dry ice/blue ice unless customers require otherwise.

GENE INFORMATION
Gene Name

CHIT1 chitinase 1 (chitotriosidase) [Homo sapiens (human)]

Official Symbol

CHIT1

Synonyms

CHIT1; chitinase 1 (chitotriosidase); chitotriosidase-1; CHI3; CHIT; chitinase-1; plasma methylumbelliferyl tetra-N-acetylchitotetraoside hydrolase; CHITD; FLJ00314; MGC125322;

Gene ID

1118

mRNA Refseq

NM_001256125

Protein Refseq

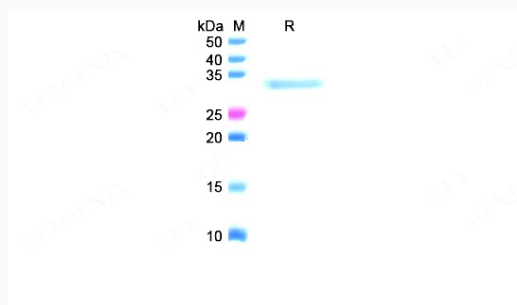
NP_001243054

MIM

600031

UniProt ID

Q13231

SDS-PAGE


Tel: 1-631-559-9269 1-516-512-3133

Email: info@creative-biomart.com Fax: 1-631-938-8127

45-1 Ramsey Road, Shirley, NY 11967, USA