

Recombinant Human CHIT1 Protein (Ala22-Asn466), C-His tagged

Cat. No. CHIT1-1719H Lot. No. (See product label)

SPECIFICATION

| | |
|-------------------------|---|
| Product Overview | Recombinant human CHIT1 (Ala22-Asn466) fused with C-terminal His tag was expressed in Mammalian cells. |
| Species | Human |
| Source | Mammalian Cells |
| ProteinLength | Ala22-Asn466 |
| Form | Lyophilized powder/frozen liquid |
| Molecular Mass | 48.95 kDa |
| Purity | >90% as determined by SDS-PAGE |
| Notes | For research use only. |
| Storage | Use a manual defrost freezer and avoid repeated freeze thaw cycles. Store at 2 to 8 centigrade for one week. Store at -20 to -80 centigrade for twelve months from the date of receipt. |
| Storage Buffer | Supplied as solution form in PBS or lyophilized from PBS. |
| Reconstitution | Reconstitute in sterile water for a stock solution. |

 Tel: 1-631-559-9269 1-516-512-3133

 Email: info@creative-biomart.com  Fax: 1-631-938-8127

 45-1 Ramsey Road, Shirley, NY 11967, USA

Shipping They are shipped out with dry ice/blue ice unless customers require otherwise.

GENE INFORMATION

Gene Name CHIT1 chitinase 1 (chitotriosidase) [Homo sapiens (human)]

Official Symbol CHIT1

Synonyms CHIT1; chitinase 1 (chitotriosidase); chitotriosidase-1; CHI3; CHIT; chitinase-1; plasma methylumbelliferyl tetra-N-acetylchitotetraoside hydrolase; CHITD; FLJ00314; MGC125322;

Gene ID 1118

mRNA Refseq NM_001256125

Protein Refseq NP_001243054

MIM 600031

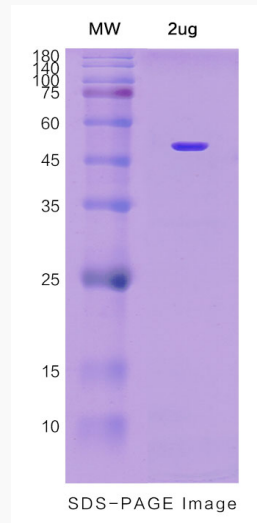
UniProt ID Q13231

 Tel: 1-631-559-9269 1-516-512-3133

 Email: info@creative-biomart.com  Fax: 1-631-938-8127

 45-1 Ramsey Road, Shirley, NY 11967, USA

SDS-PAGE



 Tel: 1-631-559-9269 1-516-512-3133

 Email: info@creative-biomart.com  Fax: 1-631-938-8127

 45-1 Ramsey Road, Shirley, NY 11967, USA