

Recombinant Full Length Human CHIT1 Protein, C-Flag-tagged

Cat. No. CHIT1-1899HFL **Lot. No.** (See product label)

SPECIFICATION

Product Overview	Recombinant Full Length Human CHIT1 Protein, fused to Flag-tag at C-terminus, was expressed in Mammalian cells.
Species	Human
Source	Mammalian Cells
Description	Chitotriosidase is secreted by activated human macrophages and is markedly elevated in plasma of Gaucher disease patients. The expression of chitotriosidase occurs only at a late stage of differentiation of monocytes to activated macrophages in culture. Human macrophages can synthesize a functional chitotriosidase, a highly conserved enzyme with a strongly regulated expression. This enzyme may play a role in the degradation of chitin-containing pathogens. Several alternatively spliced transcript variants have been described for this gene.
Form	25 mM Tris HCl, pH 7.3, 100 mM glycine, 10% glycerol.
Molecular Mass	51.5 kDa
AA Sequence	MVRSVAWAGFMVLLMIPWGSAAKLVCYFTNWAQYRQGEARFLPKDLDPSTLCTHLIY AFAGMTNHQLSTTE WNDETLYQEFNGLKMKMNPCLKTLLAIGGWNFGTQKFTDMVA TANNRQTFVNSAIRFLRKYSFDGLDLDE YPGSQGSPAVDKERFTTLVQDLANAFQ QEAQTSGKERLLLSAAVPAGQTYVDAGYEVDKIAQNLDVFNLM AYDFHGSWEKVT GHNSPLYKRQEESGAAASLNVDAAVQQWLQKGTTPASKLILGMPTYGRSFTLASSSD TR VGAPATGSGTGPFTKEGGMLAYYEVCSWKGATKQRIQDQKVPYIFRDNQWV

 Tel: 1-631-559-9269 1-516-512-3133

 Email: info@creative-biomart.com  Fax: 1-631-938-8127

 45-1 Ramsey Road, Shirley, NY 11967, USA

GFDDVESFKTKVSYLKQK GLGGAMVWALDLDLDFAGFSCNQGRYPLIQTLRQELSL
 PYLPSGTPELEVPKPGQPSEPEHGPSPGQDTFC QGKADGLYPNPRERSSFYSCAA
 GRLFQQSCPTGLVFSNSCKCCTWN TRTRPLEQKLISEEDLAANDILDYKDDDDKV

Purity	> 80% as determined by SDS-PAGE and Coomassie blue staining.
Stability	Stable for 12 months from the date of receipt of the product under proper storage and handling conditions. Avoid repeated freeze-thaw cycles.
Storage	Store at -80 centigrade.
Concentration	>50 ug/mL as determined by microplate BCA method.
Preparation	Recombinant protein was captured through anti-DDK affinity column followed by conventional chromatography steps.
Protein Families	Secreted Protein, Transmembrane
Protein Pathways	Amino sugar and nucleotide sugar metabolism
Full Length	Full L.

GENE INFORMATION

Gene Name	CHIT1 chitinase 1 [Homo sapiens (human)]
Official Symbol	CHIT1
Synonyms	CHI3; CHIT; CHITD
Gene ID	1118

 Tel: 1-631-559-9269 1-516-512-3133

 Email: info@creative-biomart.com  Fax: 1-631-938-8127

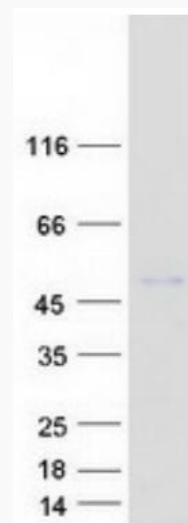
 45-1 Ramsey Road, Shirley, NY 11967, USA

mRNA Refseq [NM_003465.3](#)

Protein Refseq [NP_003456.1](#)

MIM [600031](#)

UniProt ID [Q13231](#)



Coomassie blue staining of purified CHIT1 protein.

 Tel: 1-631-559-9269 1-516-512-3133

 Email: info@creative-biomart.com  Fax: 1-631-938-8127

 45-1 Ramsey Road, Shirley, NY 11967, USA