

# Recombinant Human CHIT1 Protein, Myc/DDK-tagged, C13 and N15-labeled

**Cat. No.** CHIT1-2701H    **Lot. No.** (See product label)

## SPECIFICATION

<b>Product Overview</b>	CHIT1 MS Standard C13 and N15-labeled recombinant protein (NP_003456) with a C-terminal MYC/DDK tag, was expressed in HEK293 cells.
<b>Species</b>	Human
<b>Source</b>	HEK293
<b>Description</b>	Chitotriosidase is secreted by activated human macrophages and is markedly elevated in plasma of Gaucher disease patients. The expression of chitotriosidase occurs only at a late stage of differentiation of monocytes to activated macrophages in culture. Human macrophages can synthesize a functional chitotriosidase, a highly conserved enzyme with a strongly regulated expression. This enzyme may play a role in the degradation of chitin-containing pathogens. Several alternatively spliced transcript variants have been described for this gene.
<b>Molecular Mass</b>	51.5 kDa
<b>AA Sequence</b>	MVRSVAWAGFMVLLMIPWGSAAKLVCYFTNWAQYRQGEARFLPKDLDPSTLCTHLIY AFAGMTNHQLSTTEWNETLYQEFNGLKMKMNPKLKTLAIGGWNFQTQKFTDMVAT ANNRQTFVNSAIRFLRKYSFDGLDLWEYPGSQGSPAVDKERFTTLVQDLANAFQQ EAQTSGKERLLLSSAAVPAGQTYVDAGYEVDKIAQNLDVNLMAFDHGSWEKVTGH NSPLYKRQEESGAAASLNVDAAVQQWLQKGT PASKLILGMPTYGRSFTLASSSDTR VGAPATGSGTPGPFTKEGGMLAYYEVC SWKGATKQRIQDQKVPYIFRDNQWVGF

 Tel: 1-631-559-9269    1-516-512-3133

 Email: [info@creative-biomart.com](mailto:info@creative-biomart.com)     Fax: 1-631-938-8127

 45-1 Ramsey Road, Shirley, NY 11967, USA

DVESFKTKVSYLKQKGLGGAMVWALDLDLDFAGFSCNQGRYPLIQTLRQELSLPYLP  
 SGTPELEVPKPGQPSEPEHGPSPGQDTFCQGKADGLYPNPRERSSFYSCAAGRLF  
 QQSCPTGLVFSNSCKCCTWNTRTRPLEQKLISEEDLAANDILDYKDDDDKV

**Purity** > 80% as determined by SDS-PAGE and Coomassie blue staining

**Stability** Stable for 3 months from receipt of products under proper storage and handling conditions.

**Storage** Store at -80 centigrade. Avoid repeated freeze-thaw cycles.

**Concentration** 50 µg/mL as determined by BCA

**Storage Buffer** 100 mM glycine, 25 mM Tris-HCl, pH 7.3.

## GENE INFORMATION

**Gene Name** CHIT1 chitinase 1 [ Homo sapiens (human) ]

**Official Symbol** CHIT1

**Synonyms** CHIT1; chitinase 1 (chitotriosidase); chitotriosidase-1; CHI3; CHIT; chitinase-1; plasma methylumbelliferyl tetra-N-acetylchitotetraoside hydrolase; CHITD; FLJ00314; MGC125322;

**Gene ID** 1118

**mRNA Refseq** NM\_003465

**Protein Refseq** NP\_003456

 Tel: 1-631-559-9269 1-516-512-3133

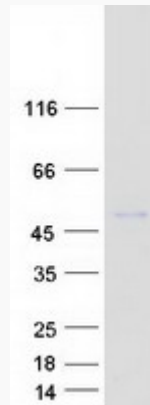
 Email: [info@creative-biomart.com](mailto:info@creative-biomart.com)  Fax: 1-631-938-8127

 45-1 Ramsey Road, Shirley, NY 11967, USA

**MIM** 600031

**UniProt ID** Q13231

**SDS-PAGE**



 Tel: 1-631-559-9269 1-516-512-3133

 Email: [info@creative-biomart.com](mailto:info@creative-biomart.com)  Fax: 1-631-938-8127

 45-1 Ramsey Road, Shirley, NY 11967, USA