

Recombinant Human CHIT1 protein, His-tagged

Cat. No. CHIT1-535H Lot. No. (See product label)

SPECIFICATION

Product Overview	Recombinant Human CHIT1 protein(NP_003456.1) (Met 1-Asn 466) was expressed in HEK293, fused with a polyhistidine tag at the C-terminus.
Species	Human
Source	HEK293
ProteinLength	1-466 aa
Form	Lyophilized from sterile 12.5mM Tris, 75mM NaCl, 50% glycerol, pH 7.5.
Molecular Mass	The recombinant human CHIT1 consists of 456 amino acids after removal of the signal peptide and has a predicted molecular mass of 50.8 kDa. In SDS-PAGE under reducing conditions, the apparent molecular mass of rh CHIT1 is approximately 48 kDa.
Endotoxin	< 1.0 EU per µg of the protein as determined by the LAL method.
Purity	> 94 % as determined by SDS-PAGE
Storage	Store it under sterile conditions at -20°C to -80°C upon receiving. Recommend to aliquot the protein into smaller quantities for optimal storage. Avoid repeated freeze-thaw cycles.
Reconstitution	It is recommended that sterile water be added to the vial to prepare a stock solution of

 Tel: 1-631-559-9269 1-516-512-3133

 Email: info@creative-biomart.com  Fax: 1-631-938-8127

 45-1 Ramsey Road, Shirley, NY 11967, USA

0.2 ug/ul. Centrifuge the vial at 4°C before opening to recover the entire contents.

protein Refseq-Weblink http://www.ncbi.nlm.nih.gov/protein/NP_001243054.1

Unit ID Q13231

Unit ID-Weblink <https://www.uniprot.org/uniprotkb/Q13231>

GENE INFORMATION

Gene Name [CHIT1 chitinase 1 \(chitotriosidase\) \[Homo sapiens \]](#)

Official Symbol [CHIT1](#)

Synonyms CHIT1; chitinase 1 (chitotriosidase); chitotriosidase-1; CHI3; CHIT; chitinase-1; plasma methylumbelliferyl tetra-N-acetylchitotetraoside hydrolase; CHITD; FLJ00314; MGC125322;

Gene ID [1118](#)

mRNA Refseq [NM_001256125](#)

protein Refseq [NP_001243054](#)

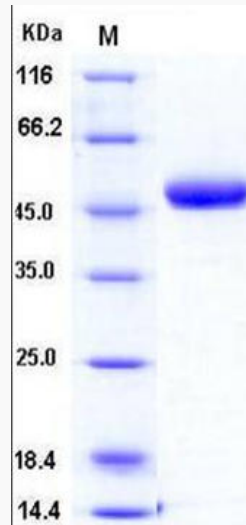
MIM [600031](#)

 Tel: 1-631-559-9269 1-516-512-3133

 Email: info@creative-biomart.com  Fax: 1-631-938-8127

 45-1 Ramsey Road, Shirley, NY 11967, USA

SDS-PAGE



 Tel: 1-631-559-9269 1-516-512-3133

 Email: info@creative-biomart.com  Fax: 1-631-938-8127

 45-1 Ramsey Road, Shirley, NY 11967, USA