

## Recombinant Human CHKA Protein, GST-Tagged

Cat. No. CHKA-1240H Lot. No. (See product label)

### SPECIFICATION

<b>Product Overview</b>	Human CHKA full-length ORF (NP_001268.2, 1 a.a. - 457 a.a.) recombinant protein with GST-tag at N-terminal.
<b>Species</b>	Human
<b>Source</b>	Wheat Germ
<b>Description</b>	The major pathway for the biosynthesis of phosphatidylcholine occurs via the CDP-choline pathway. The protein encoded by this gene is the initial enzyme in the sequence and may play a regulatory role. The encoded protein also catalyzes the phosphorylation of ethanolamine. Two transcript variants encoding different isoforms have been found for this gene. [provided by RefSeq, Jul 2008]
<b>Molecular Mass</b>	78.6 kDa
<b>AA Sequence</b>	MKTKFCTGGEAEPSPLGLLLSCGSGSAAPAGVGGQRDAASDLESKQLGGQQPPL ALPPPPPLPLPLPQPPPPQPPADEQPEPRTRRRAYLWCKEFLPGAWRGLREDEF HISVIRGGLSNMLFQCSPDATTATLGDEPRKVLLRLYGAILQMRSCNKEGSEQAQKE NEFQGAEAMVLESVMFAILAERSLGPPLYGIFPQGRLEQFIPSRRLDTEELSLPDISA EIAEKMATFHGMKMPFNKEPKWLFGTMEKYLKEVLRIFTEESRIKHLKLLSYNLPL ELENLRSLLESTPSPVVFCHNDCQEGNILLEGRENSEKQKLMLIDFEYSSYNYRGF DIGNHFCEWMYDYSYEKYPFFRANIRKYPTKKQQLHFISYLPQAFQNDNFENLSTEEK SIIKEEMLLEVNRFALASHFLWGLWSIVQAKISSIEFGYMDYAQARFDAYFHQKRKLG V

 Tel: 1-631-559-9269 1-516-512-3133

 Email: [info@creative-biomart.com](mailto:info@creative-biomart.com)  Fax: 1-631-938-8127

 45-1 Ramsey Road, Shirley, NY 11967, USA



<b>Applications</b>	Enzyme-linked Immunoabsorbent Assay Western Blot (Recombinant protein) Antibody Production Protein Array
<b>Storage</b>	Store at -80 centigrade. Aliquot to avoid repeated freezing and thawing.
<b>Storage Buffer</b>	50 mM Tris-HCl, 10 mM reduced Glutathione, pH=8.0 in the elution buffer.

## GENE INFORMATION

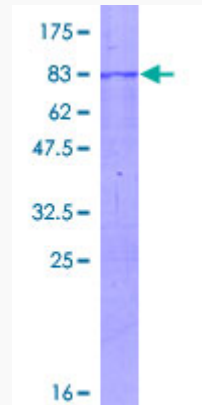
<b>Gene Name</b>	CHKA choline kinase alpha [ Homo sapiens ]
<b>Official Symbol</b>	CHKA
<b>Synonyms</b>	CHKA; choline kinase alpha; CHK, choline kinase; CKI; CHETK-alpha; ethanolamine kinase; CK; EK; CHK;
<b>Gene ID</b>	1119
<b>mRNA Refseq</b>	NM_001277
<b>Protein Refseq</b>	NP_001268
<b>MIM</b>	118491
<b>UniProt ID</b>	P35790

Tel: 1-631-559-9269 1-516-512-3133

Email: [info@creative-biomart.com](mailto:info@creative-biomart.com) Fax: 1-631-938-8127

45-1 Ramsey Road, Shirley, NY 11967, USA

**Quality Control  
Testing**



12.5% SDS-PAGE Stained with Coomassie Blue.

 Tel: 1-631-559-9269 1-516-512-3133

 Email: [info@creative-biomart.com](mailto:info@creative-biomart.com)  Fax: 1-631-938-8127

 45-1 Ramsey Road, Shirley, NY 11967, USA