

Recombinant Human CHKA Protein, Myc/DDK-tagged, C13 and N15-labeled

Cat. No. CHKA-5412H **Lot. No.** (See product label)

SPECIFICATION

Product Overview	CHKA MS Standard C13 and N15-labeled recombinant protein (NP_997634) with a C-terminal MYC/DDK tag, was expressed in HEK293 cells.
Species	Human
Source	HEK293
Description	The major pathway for the biosynthesis of phosphatidylcholine occurs via the CDP-choline pathway. The protein encoded by this gene is the initial enzyme in the sequence and may play a regulatory role. The encoded protein also catalyzes the phosphorylation of ethanolamine. Two transcript variants encoding different isoforms have been found for this gene.
Molecular Mass	50 kDa
AA Sequence	MKTKFCTGGEAEPSPLGLLLSCGSGSAAPAPGVGQQRDAASDLESKQLGGQQPPL ALPPPPPLPLPLPQPPPPQPPADEQPEPRTRRRAYLWCKEFLPGAWRGLREDEF HISVIRGGLSNMLFQCSPDTTATLGDEPRKVLLRLYGAILQVGAEAMVLESVMFAIL AERSLGPPLYGIFPQGRLEQFIPSRRLDTEELGLPDISAEIAEKMATFHGMKMPFNKE PKWLFGTMEKYLKEVLRIFTEESRIKKLHKLLSYNLPLELENLRSLESTPSPVVFCH NDCQEGNILLLEGRENSEKQKMLIDFEYSSYNYRGFDIGNHFCEWMYDYSYKYP FFRANIRKYPTKKQQLHFISYLPFQNDFENLSTEEKSIIKEEMLLEVNRFALASHFL WGQWSIVQAKISSIEFGYMDYAQARFDAYFHQKRKLGVTRTRPLEQKLISEEDLAAN

 Tel: 1-631-559-9269 1-516-512-3133

 Email: info@creative-biomart.com  Fax: 1-631-938-8127

 45-1 Ramsey Road, Shirley, NY 11967, USA

DILDYKDDDDKV

Purity > 80% as determined by SDS-PAGE and Coomassie blue staining

Stability Stable for 3 months from receipt of products under proper storage and handling conditions.

Storage Store at -80 centigrade. Avoid repeated freeze-thaw cycles.

Concentration 50 µg/mL as determined by BCA

Storage Buffer 100 mM glycine, 25 mM Tris-HCl, pH 7.3.

GENE INFORMATION

Gene Name [CHKA choline kinase alpha \[Homo sapiens \(human\) \]](#)

Official Symbol [CHKA](#)

Synonyms CHKA; choline kinase alpha; CHK, choline kinase; CKI; CHETK-alpha; ethanolamine kinase; CK; EK; CHK;

Gene ID [1119](#)

mRNA Refseq [NM_212469](#)

Protein Refseq [NP_997634](#)

MIM [118491](#)

UniProt ID [P35790](#)

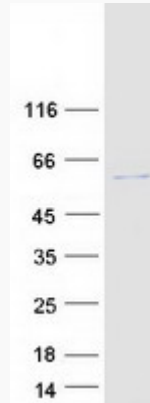
 Tel: 1-631-559-9269 1-516-512-3133

 Email: info@creative-biomart.com  Fax: 1-631-938-8127

 45-1 Ramsey Road, Shirley, NY 11967, USA



SDS-PAGE



Tel: 1-631-559-9269 1-516-512-3133

Email: info@creative-biomart.com Fax: 1-631-938-8127

45-1 Ramsey Road, Shirley, NY 11967, USA