

Recombinant Human CHKB Protein, GST-Tagged

Cat. No. CHKB-1243H Lot. No. (See product label)

SPECIFICATION

Product Overview	Human CHKB full-length ORF (NP_005189.2, 1 a.a. - 395 a.a.) recombinant protein with GST-tag at N-terminal.
Species	Human
Source	Wheat Germ
Description	Choline kinase (CK) and ethanolamine kinase (EK) catalyze the phosphorylation of choline/ethanolamine to phosphocholine/phosphoethanolamine. This is the first enzyme in the biosynthesis of phosphatidylcholine/phosphatidylethanolamine in all animal cells. The highly purified CKs from mammalian sources and their recombinant gene products have been shown to have EK activity also, indicating that both activities reside on the same protein. The choline kinase-like protein encoded by CHKL belongs to the choline/ethanolamine kinase family; however, its exact function is not known. Read-through transcripts are expressed from this locus that include exons from the downstream CPT1B locus. [provided by RefSeq, Jun 2009]
Molecular Mass	71.7 kDa
AA Sequence	MAAEATAVAGSGAVGGCLAKDGLQQSKCPDTPKRRRASSLSRDAERRAYQWCR EYLGGAWRVQPEELRVYPVSGGLSNLLFRCSLPDHLPSVGEEPREVLLRLYGAIL QGVDSLVLVESVMFAILAERSLGPQLYGVFPEGRLEQYIPSRPLKTQELREPVLSAAIA TKMAQFHGMEMPFTKEPHWLFGTMERYLKQIQDLPPTGLPEMNLLEMYSLKDEMG NLRKLLSTPSPVVFCHNDIQEGNILLSEPENADSLMLVDFEYSSYNYRGFDIGNHF

 Tel: 1-631-559-9269 1-516-512-3133

 Email: info@creative-biomart.com  Fax: 1-631-938-8127

 45-1 Ramsey Road, Shirley, NY 11967, USA

CEWVYDYTHEEWPFYKARPTDYPTQEQQLHFIRHYLAEAKKGETLSQEEQRKLEED
 LLVEVSRYALASHFFWGLWSILQASMSTIEFGYLDYAQSRFQFYFQQKGQLTSVHSS
 S

Applications	Enzyme-linked Immunoabsorbent Assay Western Blot (Recombinant protein) Antibody Production Protein Array
Storage	Store at -80 centigrade. Aliquot to avoid repeated freezing and thawing.
Storage Buffer	50 mM Tris-HCl, 10 mM reduced Glutathione, pH=8.0 in the elution buffer.

GENE INFORMATION

Gene Name	CHKB choline kinase beta [Homo sapiens]
Official Symbol	CHKB
Synonyms	CHKB; choline kinase beta; CHKL, choline kinase like; choline/ethanolamine kinase; CHETK; ethanolamine kinase beta; choline kinase-like protein; CK; EK; CKB; EKB; CHKL; CKEKB; MDCMC;
Gene ID	1120
mRNA Refseq	NM_005198
Protein Refseq	NP_005189
MIM	612395

 Tel: 1-631-559-9269 1-516-512-3133

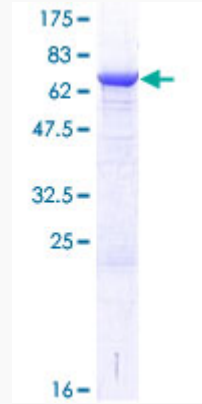
 Email: info@creative-biomart.com  Fax: 1-631-938-8127

 45-1 Ramsey Road, Shirley, NY 11967, USA


UniProt ID

Q9Y259


Quality Control
Testing



12.5% SDS-PAGE Stained with Coomassie Blue.

 Tel: 1-631-559-9269 1-516-512-3133

 Email: info@creative-biomart.com  Fax: 1-631-938-8127

 45-1 Ramsey Road, Shirley, NY 11967, USA