

Recombinant Human CHKB Protein, Myc/DDK-tagged, C13 and N15-labeled

Cat. No. CHKB-4578H **Lot. No.** (See product label)

SPECIFICATION

Product Overview	CHKB MS Standard C13 and N15-labeled recombinant protein (NP_689466) with a C-terminal MYC/DDK tag, was expressed in HEK293 cells.
Species	Human
Source	HEK293
Description	Choline kinase (CK) and ethanolamine kinase (EK) catalyze the phosphorylation of choline/ethanolamine to phosphocholine/phosphoethanolamine. This is the first enzyme in the biosynthesis of phosphatidylcholine/phosphatidylethanolamine in all animal cells. The highly purified CKs from mammalian sources and their recombinant gene products have been shown to have EK activity also, indicating that both activities reside on the same protein. The choline kinase-like protein encoded by CHKL belongs to the choline/ethanolamine kinase family; however, its exact function is not known. Read-through transcripts are expressed from this locus that include exons from the downstream CPT1B locus.
Molecular Mass	13.3 kDa
AA Sequence	MAAEATAVAGSGAVGGCLAKDGLQSKCPDTPKRRRASSLSRDAERRAYQWCR EYLGGAWRRVQPEELRVYPVRWEVRGQPLRCADRGGQSAAGPSGCSMFSPSPSC ARAWGGAGPAWPGGGRGRGRTRTRPLEQKLISEEDLAANDILDYKDDDDKV
Purity	> 80% as determined by SDS-PAGE and Coomassie blue staining

 Tel: 1-631-559-9269 1-516-512-3133

 Email: info@creative-biomart.com  Fax: 1-631-938-8127

 45-1 Ramsey Road, Shirley, NY 11967, USA

Stability	Stable for 3 months from receipt of products under proper storage and handling conditions.
Storage	Store at -80 centigrade. Avoid repeated freeze-thaw cycles.
Concentration	50 µg/mL as determined by BCA
Storage Buffer	100 mM glycine, 25 mM Tris-HCl, pH 7.3.

GENE INFORMATION

Gene Name	CHKB choline kinase beta [Homo sapiens (human)]
Official Symbol	CHKB
Synonyms	CHKB; choline kinase beta; CHKL, choline kinase like; choline/ethanolamine kinase; CHETK; ethanolamine kinase beta; choline kinase-like protein; CK; EK; CKB; EKB; CHKL; CKEKB; MDCMC;
Gene ID	1120
mRNA Refseq	NM_152253
Protein Refseq	NP_689466
MIM	612395
UniProt ID	Q9Y259

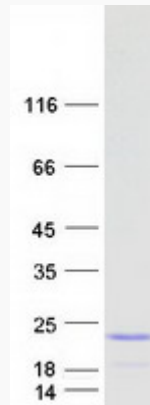
 Tel: 1-631-559-9269 1-516-512-3133

 Email: info@creative-biomart.com  Fax: 1-631-938-8127

 45-1 Ramsey Road, Shirley, NY 11967, USA



SDS-PAGE



Tel: 1-631-559-9269 1-516-512-3133

Email: info@creative-biomart.com Fax: 1-631-938-8127

45-1 Ramsey Road, Shirley, NY 11967, USA