

Recombinant Human CHM Protein (1-653 aa), His-tagged

Cat. No. CHM-1919H Lot. No. (See product label)

SPECIFICATION

Product Overview	Recombinant Human CHM Protein (1-653 aa) is produced by E. coli expression system. This protein is fused with a 6xHis tag at the N-terminal. Research Area: Neuroscience. Protein Description: Full Length.
Species	Human
Source	E.coli
ProteinLength	1-653 aa
Description	Substrate-binding subunit of the Rab geranylgeranyltransferase (GGTase) complex. Binds unprenylated Rab proteins and presents the substrate peptide to the catalytic component B composed of RABGGTA and RABGGTB, and remains bound to it after the geranylgeranyl transfer reaction. The component A is thought to be regenerated by transferring its prenylated Rab back to the donor membrane. Besides, a pre-formed complex consisting of CHM and the Rab GGTase dimer (RGGT or component B) can bind to and prenylate Rab proteins; this alternative pathway is proposed to be the predominant pathway for Rab protein geranylgeranylation.
Form	Tris-based buffer,50% glycerol
Molecular Mass	77.5 kDa
AA Sequence	MADTLPSEFDVIVIGTGLPESIIAAACSRSGRRVLHVDSRSYYGGN WASFSFSGLLS WLKEYQENS DIVSDSPVWQDQILENEEAIALSRKDKTIQHVEVFCYASQDLHEDVEE

 Tel: 1-631-559-9269 1-516-512-3133

 Email: info@creative-biomart.com  Fax: 1-631-938-8127

 45-1 Ramsey Road, Shirley, NY 11967, USA

AGALQKNHALVTSANSTEAAADSAFLPTEDESLSTMSCEMPLTEQTPSSDPENALEVN
 GAEVTGEKENHCDDKTCVPSTSAEDMSENVPIAEDTTEQPKKNRITYSQIIEGRRF
 NIDLVSHELLYSRGLLIDLLIKSNVSRYADEFKNITRILAFREGRVEQVPCSRADVFNKQ
 LTMVEKRMLMKFLTFCMEYEKYPDEYKGYEEITFYEYLKTQKLTPLNLQYIVMHSIAMT
 SETASSTIDGLKATKNFLHCLGRYGNTPFPLPLYGQGELPQCFCRMCVFGGIYCLR
 HSVQCLVVDKESRKCKAIDQFGQRIIEHFLVEDSYFPENMCSRVRQYRQISRVLIT
 DRSVLKTDSQQISILTVPAEEPGTFAVRVIELCSSTMTCMKGTYLVHLTCTSSKTAR
 EDLESVVQKLFVPTYTEMEIENEQVEKPRILWALYFNMRDSSDISRSCYNLPSNVVYV
 CSGPDCGLGNDNAVKQAETLFQEICPNEDFCPPPPNPEDIILDGDSLQPEASESSAI
 PEANSETFKESTNLGNLEESSE

Purity > 90% as determined by SDS-PAGE.

Notes Repeated freezing and thawing is not recommended. Store working aliquots at 4 centigrade for up to one week.

Storage The shelf life is related to many factors, storage state, buffer ingredients, storage temperature and the stability of the protein itself. Generally, the shelf life of liquid form is 6 months at -20 centigrade/-80 centigrade. The shelf life of lyophilized form is 12 months at -20 centigrade/-80 centigrade.

Concentration A hardcopy of COA with reconstitution instruction is sent along with the products.

GENE INFORMATION

Gene Name CHM choroideremia (Rab escort protein 1) [Homo sapiens]

Official Symbol CHM

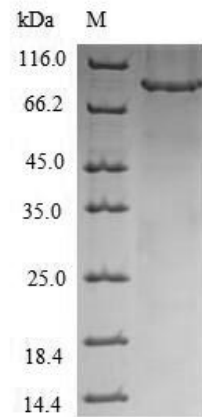
Synonyms CHM; DXS540, TCD; REP 1; TCD; GGTA; REP-1; DXS540; HSD-32; FLJ38564; MGC102710;

 Tel: 1-631-559-9269 1-516-512-3133

 Email: info@creative-biomart.com  Fax: 1-631-938-8127

 45-1 Ramsey Road, Shirley, NY 11967, USA

Gene ID	1121
mRNA Refseq	NM_000390
Protein Refseq	NP_000381
MIM	300390
UniProt ID	P24386



(Tris-Glycine gel) Discontinuous SDS-PAGE (reduced) with 5% enrichment gel and 15% separation gel.

Tel: 1-631-559-9269 1-516-512-3133

Email: info@creative-biomart.com Fax: 1-631-938-8127

45-1 Ramsey Road, Shirley, NY 11967, USA