

Recombinant Human CHMP1B Protein, GST-Tagged

Cat. No. CHMP1B-1247H Lot. No. (See product label)

SPECIFICATION

Product Overview	Human CHMP1B full-length ORF (NP_065145.2, 1 a.a. - 199 a.a.) recombinant protein with GST-tag at N-terminal.
Species	Human
Source	Wheat Germ
Description	CHMP1B belongs to the chromatin-modifying protein/charged multivesicular body protein (CHMP) family. These proteins are components of ESCRT-III (endosomal sorting complex required for transport III), a complex involved in degradation of surface receptor proteins and formation of endocytic multivesicular bodies (MVBs). Some CHMPs have both nuclear and cytoplasmic/vesicular distributions, and one such CHMP, CHMP1A (MIM 164010), is required for both MVB formation and regulation of cell cycle progression (Tsang et al., 2006 [PubMed 16730941]).[supplied by OMIM, Mar 2008]
Molecular Mass	48.5 kDa
AA Sequence	MSNMEKHLFNLKFAAKELSRSAKKCDKEEKA EKAKIKKAIQKGNMEVARIHAENAIR QKNQAVNFLRMSARVDAVAARVQTAVTMGKVTKSMAGVVKSM DATLKT MNLEKIS ALMDKFEHQFETLDVQTQQMEDTMSSTTTLTTPQNQVDM LLQEMADEAGLDL NME LPQGQTGSGVTSVASAEQDELSQRLARLRDQV
Applications	Enzyme-linked Immunoabsorbent Assay Western Blot (Recombinant protein)

 Tel: 1-631-559-9269 1-516-512-3133

 Email: info@creative-biomart.com  Fax: 1-631-938-8127

 45-1 Ramsey Road, Shirley, NY 11967, USA

Antibody Production
Protein Array

Storage Store at -80 centigrade. Aliquot to avoid repeated freezing and thawing.

Storage Buffer 50 mM Tris-HCl, 10 mM reduced Glutathione, pH=8.0 in the elution buffer.

GENE INFORMATION

Gene Name CHMP1B charged multivesicular body protein 1B [Homo sapiens]

Official Symbol CHMP1B

Synonyms CHMP1B; charged multivesicular body protein 1B; chromatin modifying protein 1B; charged multivesicular body protein 1b; C18orf2; CHMP1.5; Vps46B; vacuolar protein sorting 46-2; chromatin-modifying protein 1b; vacuolar protein sorting-associated protein 46-2; C10orf2; Vps46-2; C18-ORF2; hVps46-2;

Gene ID 57132

mRNA Refseq NM_020412

Protein Refseq NP_065145

MIM 606486

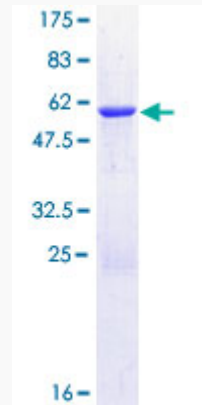
UniProt ID Q7LBR1

 Tel: 1-631-559-9269 1-516-512-3133

 Email: info@creative-biomart.com  Fax: 1-631-938-8127

 45-1 Ramsey Road, Shirley, NY 11967, USA

**Quality Control
Testing**



12.5% SDS-PAGE Stained with Coomassie Blue.

 Tel: 1-631-559-9269 1-516-512-3133

 Email: info@creative-biomart.com  Fax: 1-631-938-8127

 45-1 Ramsey Road, Shirley, NY 11967, USA