

Recombinant Human CHMP1B protein, His-tagged

Cat. No. CHMP1B-6794H Lot. No. (See product label)

SPECIFICATION

Product Overview	Recombinant Human CHMP1B protein(1-199 aa), fused with N-terminal His tag, was expressed in E.coli.
Species	Human
Source	E.coli
ProteinLength	1-199 aa
Form	The purified protein was Lyophilized from sterile PBS (58mM Na ₂ HPO ₄ , 17mM NaH ₂ PO ₄ , 68mM NaCl, pH7.4). 5 % trehalose and 5 % mannitol are added as protectant before lyophilization. The elution buffer contain 300mM imidazole.
AASequence	MSNMEKHLFNLKFAAKELSRSAKKCDKEEKA EKAKIKKAIQKGNMEVARIHAENAIR QKNQAVNFLRMSARVDAVAARVQTAVTMGKVTKSMAGVVKSM DATLKT MNLEKIS ALMDKFEHQFETLDVQTQQMEDTMSSTTTLTTPQNQVDM LLQEMADEAGLDLNME LPQGQTGSVGT SVASAEQDELSQRLARLRDQV
Purity	80%, by SDS-PAGE with Coomassie Brilliant Blue staining.
Storage	Store at 2-8°C for 1-2 weeks. Aliquot and store at -20°C to -80°C for up to 3 months, reconstitution with sterile water and addition of an equal volume of glycerol. Avoid repeat freeze-thaw cycles.
Reconstitution	Dissolve the product in 200 µl sterile water to achieve a working concentration of 0.25

 Tel: 1-631-559-9269 1-516-512-3133

 Email: info@creative-biomart.com  Fax: 1-631-938-8127

 45-1 Ramsey Road, Shirley, NY 11967, USA

g/μl. If experimental compatibility allows, mix the aqueous solution with an equal volume of glycerol (1:1 ratio) after initial reconstitution.

GENE INFORMATION

Gene Name	CHMP1B charged multivesicular body protein 1B [Homo sapiens]
Official Symbol	CHMP1B
Synonyms	CHMP1B; charged multivesicular body protein 1B; chromatin modifying protein 1B; charged multivesicular body protein 1b; C18orf2; CHMP1.5; Vps46B; vacuolar protein sorting 46-2; chromatin-modifying protein 1b; vacuolar protein sorting-associated protein 46-2; C10orf2; Vps46-2; C18-ORF2; hVps46-2;
Gene ID	57132
mRNA Refseq	NM_020412
Protein Refseq	NP_065145
MIM	606486
UniProt ID	Q7LBR1

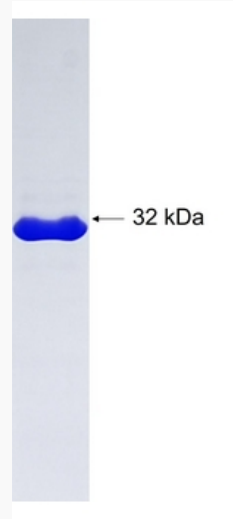
 Tel: 1-631-559-9269 1-516-512-3133

 Email: info@creative-biomart.com  Fax: 1-631-938-8127

 45-1 Ramsey Road, Shirley, NY 11967, USA



SDS-PAGE



Tel: 1-631-559-9269 1-516-512-3133

Email: info@creative-biomart.com Fax: 1-631-938-8127

45-1 Ramsey Road, Shirley, NY 11967, USA