

## Recombinant Human CHMP2A Protein, GST-Tagged

Cat. No. CHMP2A-1249H Lot. No. (See product label)

### SPECIFICATION

|                         |   |
|-------------------------|---|
| <b>Product Overview</b> | Human CHMP2A full-length ORF (NP_055268, 1 a.a. - 222 a.a.) recombinant protein with GST-tag at N-terminal.   |
| <b>Species</b>          | Human   |
| <b>Source</b>           | Wheat Germ  |
| <b>Description</b>      | CHMP2A belongs to the chromatin-modifying protein/charged multivesicular body protein (CHMP) family. These proteins are components of ESCRT-III (endosomal sorting complex required for transport III), a complex involved in degradation of surface receptor proteins and formation of endocytic multivesicular bodies (MVBs). Some CHMPs have both nuclear and cytoplasmic/vesicular distributions, and one such CHMP, CHMP1A (MIM 164010), is required for both MVB formation and regulation of cell cycle progression (Tsang et al., 2006 [PubMed 16730941]).[supplied by OMIM, Mar 2008] |
| <b>Molecular Mass</b>   | 50.05 kDa   |
| <b>AA Sequence</b>      | MDLLFGRRKTPPELLRQNQRALNRAMRELDREERQKLETQEKKIADIKKMAKQGQM<br>DAVRIMAKDLVRTRYVVRKFLMRANIQAVSLKIQTLKSNNNSMAQAMKGVTKAMGT<br>MNRQLKLPQIQKIMMEFERQAEIMDMKEEMMNDAIDDAMGDEEDEEESDAVVSVQL<br>DELGLSLTDELSNLPSTGGSLSVAAAGGKKAEEAASALADADADLEERLKNLRRD   |
| <b>Applications</b>     | Enzyme-linked Immunoabsorbent Assay<br>Western Blot (Recombinant protein)   |

 Tel: 1-631-559-9269 1-516-512-3133

 Email: [info@creative-biomart.com](mailto:info@creative-biomart.com)  Fax: 1-631-938-8127

 45-1 Ramsey Road, Shirley, NY 11967, USA

Antibody Production  
Protein Array

**Storage** Store at -80 centigrade. Aliquot to avoid repeated freezing and thawing.

**Storage Buffer** 50 mM Tris-HCl, 10 mM reduced Glutathione, pH=8.0 in the elution buffer.

## GENE INFORMATION

**Gene Name** CHMP2A charged multivesicular body protein 2A [ Homo sapiens ]

**Official Symbol** CHMP2A

**Synonyms** CHMP2A; charged multivesicular body protein 2A; chromatin modifying protein 2A; charged multivesicular body protein 2a; BC 2; CHMP2; putative breast adenocarcinoma marker (32kD); VPS2; VPS2 homolog A (S. cerevisiae); VPS2A; vps2-1; hVps2-1; VPS2 homolog A; chromatin-modifying protein 2a; putative breast adenocarcinoma marker BC-2; vacuolar protein sorting-associated protein 2-1; BC2; BC-2;

**Gene ID** 27243

**mRNA Refseq** NM\_014453

**Protein Refseq** NP\_055268

**MIM** 610893

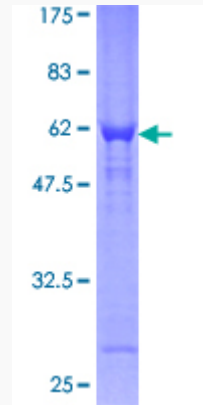
**UniProt ID** O43633

 Tel: 1-631-559-9269 1-516-512-3133

 Email: [info@creative-biomart.com](mailto:info@creative-biomart.com)  Fax: 1-631-938-8127

 45-1 Ramsey Road, Shirley, NY 11967, USA

**Quality Control  
Testing**



12.5% SDS-PAGE Stained with Coomassie Blue.

 Tel: 1-631-559-9269 1-516-512-3133

 Email: [info@creative-biomart.com](mailto:info@creative-biomart.com)  Fax: 1-631-938-8127

 45-1 Ramsey Road, Shirley, NY 11967, USA