

Recombinant Human CHMP2A Protein, Myc/DDK-tagged, C13 and N15-labeled

Cat. No. CHMP2A-4011H Lot. No. (See product label)

SPECIFICATION

Product Overview	CHMP2A MS Standard C13 and N15-labeled recombinant protein (NP_940818) with a C-terminal MYC/DDK tag, was expressed in HEK293 cells.
Species	Human
Source	HEK293
Description	CHMP2A belongs to the chromatin-modifying protein/charged multivesicular body protein (CHMP) family. These proteins are components of ESCRT-III (endosomal sorting complex required for transport III), a complex involved in degradation of surface receptor proteins and formation of endocytic multivesicular bodies (MVBs). Some CHMPs have both nuclear and cytoplasmic/vesicular distributions, and one such CHMP, CHMP1A, is required for both MVB formation and regulation of cell cycle progression.
Molecular Mass	25.1 kDa
AA Sequence	MDLLFGRRKTPPELLRQNQRALNRAMRELD RERQKLETQEKKIADIKKMAKQGQM DAVRIMAKDLVRTRYVRKFLMRANIQAVSLKIQTLKSNN SMAQAMKGVTKAMGT MNRQLKLPQIQKIMMEFERQAEIMDMKEEMMNDAIDDAMGDEEDEEESDAVV SQVL DELGLSLTDELSNLPSTGGSL SVAAGGKKAEEAASALADADADLEERLKNLRRDTRT RPLEQKLISEEDLAANDILDYKDDDDKV
Purity	> 80% as determined by SDS-PAGE and Coomassie blue staining

 Tel: 1-631-559-9269 1-516-512-3133

 Email: info@creative-biomart.com  Fax: 1-631-938-8127

 45-1 Ramsey Road, Shirley, NY 11967, USA

Stability	Stable for 3 months from receipt of products under proper storage and handling conditions.
Storage	Store at -80 centigrade. Avoid repeated freeze-thaw cycles.
Concentration	50 µg/mL as determined by BCA
Storage Buffer	100 mM glycine, 25 mM Tris-HCl, pH 7.3.
GENE INFORMATION	
Gene Name	CHMP2A charged multivesicular body protein 2A [Homo sapiens (human)]
Official Symbol	CHMP2A
Synonyms	CHMP2A; charged multivesicular body protein 2A; chromatin modifying protein 2A; charged multivesicular body protein 2a; BC 2; CHMP2; putative breast adenocarcinoma marker (32kD); VPS2; VPS2 homolog A (S. cerevisiae); VPS2A; vps2-1; hVps2-1; VPS2 homolog A; chromatin-modifying protein 2a; putative breast adenocarcinoma marker BC-2; vacuolar protein sorting-associated protein 2-1; BC2; BC-2;
Gene ID	27243
mRNA Refseq	NM_198426
Protein Refseq	NP_940818
MIM	610893
UniProt ID	O43633

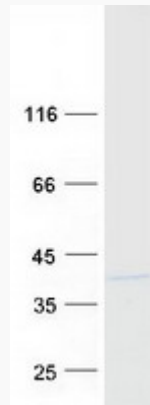
 Tel: 1-631-559-9269 1-516-512-3133

 Email: info@creative-biomart.com  Fax: 1-631-938-8127

 45-1 Ramsey Road, Shirley, NY 11967, USA



SDS-PAGE



Tel: 1-631-559-9269 1-516-512-3133

Email: info@creative-biomart.com Fax: 1-631-938-8127

45-1 Ramsey Road, Shirley, NY 11967, USA