

Recombinant Human CHMP4C protein, His-tagged

Cat. No. CHMP4C-11188H Lot. No. (See product label)

SPECIFICATION

Product Overview	Recombinant Human CHMP4C protein(1-233 aa), fused with N-terminal His tag, was expressed in E.coli.
Species	Human
Source	E.coli
ProteinLength	1-233 aa
Form	The purified protein was lyophilized from sterile phosphate-buffered saline (PBS: 58 mM Na ₂ HPO ₄ , 17 mM NaH ₂ PO ₄ , 68 mM NaCl, pH 7.4). Prior to lyophilization, 5% (w/v) trehalose and 5% (w/v) mannitol were incorporated as cryoprotective excipients. The protein was eluted with a buffer containing 300 mM imidazole.
AASequence	MSKLGKFFKGGGSSKSRAAPSPQEALVRLRETEEMLGKKQEYLENRIQREIALAKKH GTQNKRAALQALKRKRFEKQLTQIDGTLSTIEFQREALENSHTNTEVLRNMGFAAK AMKSVHENMDLNKIDDLMQEITEQQDIAQEISEAFSQRVGFDDDFDEDELMAELEEL EQEELNKKMTNIRLPNVPSSSLPAQPNRKPMSSTARRSRAASSQRAEEEDDDIKQ LAAWAT
Purity	85%, by SDS-PAGE with Coomassie Brilliant Blue staining.
Storage	Store at 2-8°C for 1-2 weeks. Aliquot and store at -20°C to -80°C for up to 3 months, reconstitution with sterile water and addition of an equal volume of glycerol. Avoid repeat freeze-thaw cycles.

 Tel: 1-631-559-9269 1-516-512-3133

 Email: info@creative-biomart.com  Fax: 1-631-938-8127

 45-1 Ramsey Road, Shirley, NY 11967, USA

Reconstitution

Dissolve the product in 200 µl sterile water to achieve a working concentration of 0.25 g/µl. If experimental compatibility allows, mix the aqueous solution with an equal volume of glycerol (1:1 ratio) after initial reconstitution.

GENE INFORMATION
Gene Name

CHMP4C charged multivesicular body protein 4C [Homo sapiens]

Official Symbol

CHMP4C

Synonyms

Charged multivesicular body protein 4c; CHM4C_HUMAN; CHMP4c; Chromatin-modifying protein 4c; hSnf7-3; hVps32-3; SNF7 homolog associated with Alix 3; SNF7-3; Vacuolar protein sorting-associated protein 32-3; Vps32-3;

Gene ID

92421

mRNA Refseq

NM_152284.3

Protein Refseq

NP_689497.1

MIM

610899

UniProt ID

Q96CF2

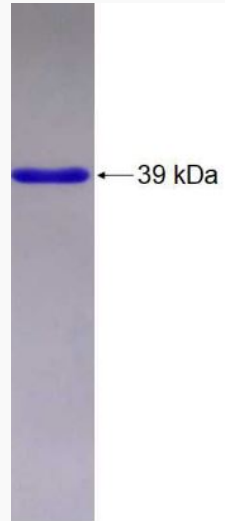
 Tel: 1-631-559-9269 1-516-512-3133

 Email: info@creative-biomart.com  Fax: 1-631-938-8127

 45-1 Ramsey Road, Shirley, NY 11967, USA



SDS-PAGE



Tel: 1-631-559-9269 1-516-512-3133

Email: info@creative-biomart.com Fax: 1-631-938-8127

45-1 Ramsey Road, Shirley, NY 11967, USA