

## Recombinant Human CHMP6 Protein, GST-Tagged

Cat. No. CHMP6-1254H Lot. No. (See product label)

### SPECIFICATION

<b>Product Overview</b>	Human CHMP6 full-length ORF (NP_078867.2, 1 a.a. - 201 a.a.) recombinant protein with GST-tag at N-terminal.
<b>Species</b>	Human
<b>Source</b>	Wheat Germ
<b>Description</b>	This gene encodes a member of the chromatin-modifying protein/charged multivesicular body protein family. Proteins in this family are part of the ESCRT-III (endosomal sorting complex required for transport III) which degrades surface receptors, and in biosynthesis of endosomes. [provided by RefSeq, Mar 2012]
<b>Molecular Mass</b>	49.9 kDa
<b>AA Sequence</b>	MGNLFGRKKQSRVTEQDKAILQLKQQRDKLRQYQKRIAQQLERERALARQLLRDGR KERAKLLKKRYQEQLLDRTENQISSLEAMVQSIEFTQIEMKVM EGLQFGNECLNK MHQVMSIEEVERILDETQEAVEYQRQIDELLAGSFTQEDEDAIL ELSAITQE QIELPE VPSEPLPEKIPENVPVKARPRQAELVAAS
<b>Applications</b>	Enzyme-linked Immunoabsorbent Assay Western Blot (Recombinant protein) Antibody Production Protein Array
<b>Storage</b>	Store at -80 centigrade. Aliquot to avoid repeated freezing and thawing.

 Tel: 1-631-559-9269 1-516-512-3133

 Email: [info@creative-biomart.com](mailto:info@creative-biomart.com)  Fax: 1-631-938-8127

 45-1 Ramsey Road, Shirley, NY 11967, USA

**Storage Buffer** 50 mM Tris-HCl, 10 mM reduced Glutathione, pH=8.0 in the elution buffer.

## GENE INFORMATION

**Gene Name** CHMP6 charged multivesicular body protein 6 [ Homo sapiens ]

**Official Symbol** CHMP6

**Synonyms** CHMP6; charged multivesicular body protein 6; chromatin modifying protein 6; FLJ11749; VPS20; hVps20; chromatin-modifying protein 6; vacuolar protein sorting-associated protein 20;

**Gene ID** 79643

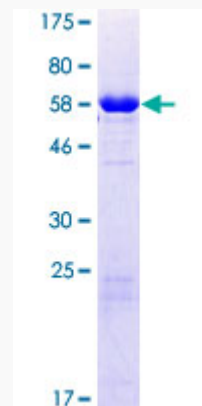
**mRNA Refseq** NM\_024591

**Protein Refseq** NP\_078867

**MIM** 610901

**UniProt ID** Q96FZ7

**Quality Control Testing**



 Tel: 1-631-559-9269 1-516-512-3133

 Email: [info@creative-biomart.com](mailto:info@creative-biomart.com)  Fax: 1-631-938-8127

 45-1 Ramsey Road, Shirley, NY 11967, USA



12.5% SDS-PAGE Stained with Coomassie Blue.

 Tel: 1-631-559-9269 1-516-512-3133

 Email: [info@creative-biomart.com](mailto:info@creative-biomart.com)  Fax: 1-631-938-8127

 45-1 Ramsey Road, Shirley, NY 11967, USA