

Recombinant Human CHORDC1 Protein, GST-Tagged

Cat. No. CHORDC1-1260H **Lot. No.** (See product label)

SPECIFICATION

Product Overview	Human CHORDC1 full-length ORF (AAH72461.1, 1 a.a. - 332 a.a.) recombinant protein with GST-tag at N-terminal.
Species	Human
Source	Wheat Germ
Description	CHORDC1 (Cysteine And Histidine Rich Domain Containing 1) is a Protein Coding gene. GO annotations related to this gene include Hsp90 protein binding. An important paralog of this gene is ITGB1BP2.
Molecular Mass	63.9 kDa
AA Sequence	MALLCYNRGCGQRFDPETNSDDACTYHPGVVPVFDALKGWSCCKRRTTDFSDFLS IVGCTKGRHNSEKPPPEPVKPEVKTTEKKELCELPKFQEHIIQAPKPVEAIKRPSPE PMTNLELKISASLKQALDKLKLSSGNEENKKEEDNDEIKIGTSCKNGGCSKTYQGLE SLEEVCVYHSGVPIFHEGMKYWSCRRKTSDFNTFLAQEGCTKGKHMWTKKDAGK KVVPCRHDWHQTGGEVTISVYAKNSLPELSRVEANSTLLNVHIVFEGEKEFDQNVKL WGVIDVKRSYVTMTATKIEITMRKAQPMQWASLELPAAKKQEKQKDATTD
Applications	Enzyme-linked Immunoabsorbent Assay Western Blot (Recombinant protein) Antibody Production Protein Array

 Tel: 1-631-559-9269 1-516-512-3133

 Email: info@creative-biomart.com  Fax: 1-631-938-8127

 45-1 Ramsey Road, Shirley, NY 11967, USA

Storage Store at -80 centigrade. Aliquot to avoid repeated freezing and thawing.

Storage Buffer 50 mM Tris-HCl, 10 mM reduced Glutathione, pH=8.0 in the elution buffer.

GENE INFORMATION

Gene Name [CHORDC1 cysteine and histidine-rich domain \(CHORD\) containing 1 \[Homo sapiens \]](#)

Official Symbol [CHORDC1](#)

Synonyms CHORDC1; cysteine and histidine-rich domain (CHORD) containing 1; cysteine and histidine rich domain (CHORD) containing 1, cysteine and histidine rich domain (CHORD) containing, zinc binding protein 1; cysteine and histidine-rich domain-containing protein 1; CHP1; CHP-1; protein morgana; CHORD-containing protein 1; chord domain-containing protein 1; cysteine and histidine-rich domain (CHORD)-containing 1; cysteine and histidine-rich domain (CHORD)-containing, zinc-binding protein 1; FLJ37289;

Gene ID [26973](#)

mRNA Refseq [NM_001144073](#)

Protein Refseq [NP_001137545](#)

MIM [604353](#)

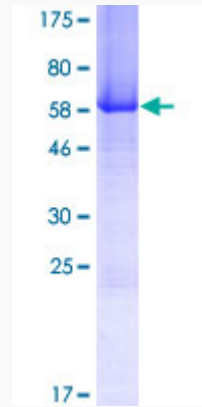
UniProt ID [Q9UHD1](#)

 Tel: 1-631-559-9269 1-516-512-3133

 Email: info@creative-biomart.com  Fax: 1-631-938-8127

 45-1 Ramsey Road, Shirley, NY 11967, USA

**Quality Control
Testing**



12.5% SDS-PAGE Stained with Coomassie Blue.

 Tel: 1-631-559-9269 1-516-512-3133

 Email: info@creative-biomart.com  Fax: 1-631-938-8127

 45-1 Ramsey Road, Shirley, NY 11967, USA