

Recombinant Human CHP1 Protein, Myc/DDK-tagged, C13 and N15-labeled

Cat. No. CHP1-4402H **Lot. No.** (See product label)

SPECIFICATION

Product Overview	CHP MS Standard C13 and N15-labeled recombinant protein (NP_009167) with a C-terminal MYC/DDK tag, was expressed in HEK293 cells.
Species	Human
Source	HEK293
Description	This gene encodes a phosphoprotein that binds to the Na ⁺ /H ⁺ exchanger NHE1. This protein serves as an essential cofactor which supports the physiological activity of NHE family members and may play a role in the mitogenic regulation of NHE1. The protein shares similarity with calcineurin B and calmodulin and it is also known to be an endogenous inhibitor of calcineurin activity.
Molecular Mass	22.5 kDa
AA Sequence	MGSRASLLRDEELEEIKKETGFSHSQITRLYSRFTSLDKGENGLSREDFQRIPELAINPLGDRIINAFFPEGEDQVNFRGFMRTLAFRPIEDNEKSKDVNGPEPLNSRSNKLHFAFRLYDLDKDEKISRDELLQVLRMMVGVNISDEQLGSIADRTIQEADQDGDLSAISFT EFVKVLEKVDVEQKMSIRFLHTRTRPLEQKLISEEDLAANDILDYKDDDDKV
Purity	> 80% as determined by SDS-PAGE and Coomassie blue staining
Stability	Stable for 3 months from receipt of products under proper storage and handling conditions.

 Tel: 1-631-559-9269 1-516-512-3133

 Email: info@creative-biomart.com  Fax: 1-631-938-8127

 45-1 Ramsey Road, Shirley, NY 11967, USA

Storage	Store at -80 centigrade. Avoid repeated freeze-thaw cycles.
Concentration	50 µg/mL as determined by BCA
Storage Buffer	100 mM glycine, 25 mM Tris-HCl, pH 7.3.
GENE INFORMATION	
Gene Name	CHP1 calcineurin like EF-hand protein 1 [Homo sapiens (human)]
Official Symbol	CHP1
Synonyms	CHP1; calcineurin like EF-hand protein 1; CHP; p22; p24; SPAX9; Sid470p; SLC9A1BP; calcineurin B homologous protein 1; EF-hand calcium-binding domain-containing protein p22; SLC9A1 binding protein; calcineurin B homolog; calcineurin B-like protein; calcineurin homologous protein; calcium binding protein P22; calcium-binding protein CHP; calcium-binding protein p22
Gene ID	11261
mRNA Refseq	NM_007236
Protein Refseq	NP_009167
MIM	606988
UniProt ID	Q99653

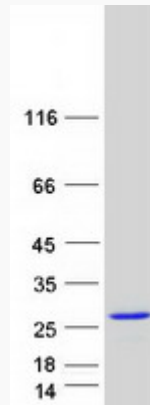
 Tel: 1-631-559-9269 1-516-512-3133

 Email: info@creative-biomart.com  Fax: 1-631-938-8127

 45-1 Ramsey Road, Shirley, NY 11967, USA



SDS-PAGE



Tel: 1-631-559-9269 1-516-512-3133

Email: info@creative-biomart.com Fax: 1-631-938-8127

45-1 Ramsey Road, Shirley, NY 11967, USA