

Recombinant Human CHRAC1 protein, His-tagged

Cat. No. CHRAC1-6639H Lot. No. (See product label)

SPECIFICATION

Product Overview	Recombinant Human CHRAC1 protein(Q9NRG0)(146aa), fused with N-terminal His tag, was expressed in E. coli.
Species	Human
Source	E.coli
Protein Length	146aa(including fusion tag)
Tag	N-His
Form	20mM Tris.Cl, 100mM NaCl, 0.4M Urea, 50% Glycerol, pH8.0.
Molecular Mass	16.6kDa(including fusion tag)
Storage	Store at -80°C and avoid repeated freeze-thaw cycles.
Reconstitution	It is recommended that sterile water be added to the vial to prepare a stock solution of 0.2 ug/ul. Centrifuge the vial at 4°C before opening to recover the entire contents.

GENE INFORMATION

Gene Name	CHRAC1 chromatin accessibility complex 1 [Homo sapiens]
Official Symbol	CHRAC1

 Tel: 1-631-559-9269 1-516-512-3133

 Email: info@creative-biomart.com  Fax: 1-631-938-8127

 45-1 Ramsey Road, Shirley, NY 11967, USA

Synonyms CHRAC1; chromatin accessibility complex 1; chromatin accessibility complex protein 1; CHRAC15; histone fold protein CHRAC15; YCL1; histone-fold protein CHRAC15; DNA polymerase epsilon subunit p15; chromatin accessibility complex 15 kDa protein; CHARC1; CHARC15; CHRAC-1; CHRAC-15;

Gene ID 54108

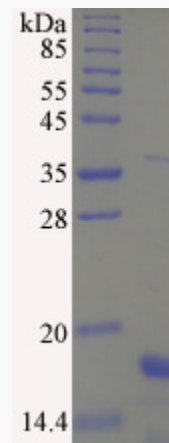
mRNA Refseq NM_017444

Protein Refseq NP_059140

MIM 607268

UniProt ID Q9NRG0

SDS-PAGE



 Tel: 1-631-559-9269 1-516-512-3133

 Email: info@creative-biomart.com  Fax: 1-631-938-8127

 45-1 Ramsey Road, Shirley, NY 11967, USA