

## Recombinant Human CHRDL1 Protein, His tagged

Cat. No. CHRDL1-001H Lot. No. (See product label)

### SPECIFICATION

<b>Product Overview</b>	Recombinant Human CHRDL1 Protein with His tag was expressed in HEK293.
<b>Species</b>	Human
<b>Source</b>	HEK293
<b>ProteinLength</b>	28-457 aa
<b>Description</b>	This gene encodes an antagonist of bone morphogenetic protein 4. The encoded protein may play a role in topographic retinotectal projection and in the regulation of retinal angiogenesis in response to hypoxia. Alternatively spliced transcript variants encoding different isoforms have been described.
<b>AASequence</b>	<p>EQVKHSETYCMFQDKKYRVGERWHPYLEPYGLVYCVNCICSENGNVLCSRVRCPN            VHCLSPVHIPHLCCPRCPDSLPPVNNKVTSKSCEYNGTTYQHGFVFAEGLFQNRQ            PNQCTQCSCSEGNVYCGLKTCPKLTCAFPVSVDPDSCCRVCRGDGELSWEHSDGDI            FRQPANREARHSYHRSHYDPPPSRQAGGLSRFPGARSHRGALMDSQQASGTIVQI            VINNKHKHKGQCVSNGKTYSHGESWHPNLRAFGIVECVLCTCNVTKQECKKIHCNP            RYPCKYPQKIDGKCKVCPGKKAKEELPGQSFNDKGYFCGEETMPVYESVFMEDG            ETTRKIALETERPPQVEVHVWTIRKGILQHFHIEKISKRMFEELPHFKLVTRTTLSQWK            IFTEGEAQISQMCSSRVC RTELEDLVKVLVLERSEKGGHCHHHHHHHH</p>
<b>Molecular Mass</b>	50 kDa
<b>Endotoxin</b>	< 1 EU/μg by LAL.

 Tel: 1-631-559-9269 1-516-512-3133

 Email: [info@creative-biomart.com](mailto:info@creative-biomart.com)  Fax: 1-631-938-8127

 45-1 Ramsey Road, Shirley, NY 11967, USA

<b>Purity</b>	> 90% by SDS-PAGE
<b>Storage</b>	Store it under sterile conditions at -20 to -80 centigrade. It is recommended that the protein be aliquoted for optimal storage. Avoid repeated freeze-thaw cycles.
<b>Storage Buffer</b>	Sterile PBS, pH7.4
<b>Concentration</b>	1 mg/mL by BCA

## GENE INFORMATION

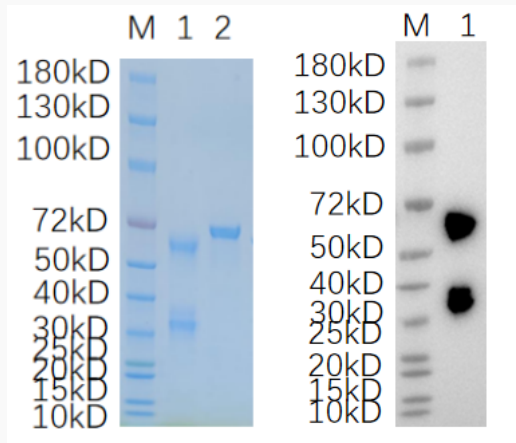
<b>Gene Name</b>	CHRDL1 chordin like 1 [ Homo sapiens (human) ]
<b>Official Symbol</b>	CHRDL1
<b>Synonyms</b>	CHRDL1; chordin-like 1; chordin-like protein 1; CHL; NRLN1; neuralin 1; neuralin-1; ventroptin; neurogenesisin-1; VOPT; dA141H5.1;
<b>Gene ID</b>	91851
<b>mRNA Refseq</b>	NM_001143981
<b>Protein Refseq</b>	NP_001137453
<b>MIM</b>	300350
<b>UniProt ID</b>	Q9BU40

 Tel: 1-631-559-9269 1-516-512-3133

 Email: [info@creative-biomart.com](mailto:info@creative-biomart.com)  Fax: 1-631-938-8127

 45-1 Ramsey Road, Shirley, NY 11967, USA

**SDS-PAGE and WB**



Reducing 4%-20% SDS-PAGE (CBB stained) and WB (Anti-His Mouse Monoclonal antibody) analysis profiles of purified CHRDL1. 1. CHRDL1: 1  $\mu$ g 2. BSA: 1  $\mu$ g

 Tel: 1-631-559-9269 1-516-512-3133

 Email: [info@creative-biomart.com](mailto:info@creative-biomart.com)  Fax: 1-631-938-8127

 45-1 Ramsey Road, Shirley, NY 11967, USA