

## Recombinant Human CHRDL1 Protein, GST-Tagged

Cat. No. CHRDL1-1267H Lot. No. (See product label)

### SPECIFICATION

<b>Product Overview</b>	Human CHRDL1 full-length ORF (ENSP00000361115, 1 a.a. - 450 a.a.) recombinant protein with GST-tag at N-terminal.
<b>Species</b>	Human
<b>Source</b>	Wheat Germ
<b>Description</b>	This gene encodes an antagonist of bone morphogenetic protein 4. The encoded protein may play a role in topographic retinotectal projection and in the regulation of retinal angiogenesis in response to hypoxia. Alternatively spliced transcript variants encoding different isoforms have been described. [provided by RefSeq, Jan 2009]
<b>Molecular Mass</b>	77.6 kDa
<b>AA Sequence</b>	MGGMKYIFSLFFLLLEGGKTEQVKHSETYCMFQDKKYRVGERWHPYLEPYGLVYC VNCICSENGNVLCSRVRCPNVHCLSPVHIPHLCCPRCPDSLPPVNNKVTSKSCEYN GTTYQHGEFLVAEGLFQNRQPNQCTQCSCSEGNVYCGLKTCPKLTCAFPVSV PDS CCRVCRGDGELSWEHSDGDIFRQPANREARHSYHRSHYDPPPSRQAGGLSRFPG ARSHRGALMDSQQASGTIVQIVINNKHKHGQVCVSNKTYSHGESWHPNLR AFGIV ECVLCTCNVTKQECKKIHC PNRY PCKYPQKIDGKCKVCPGKKAKELPGQSFDNKG YFCGEETMPVYESVFMEDGETTRKIALETERPPQVEVHVWTIRKGILQHFHIEKISKR MFEELPHFKLVTRTTLSQWKIFTEGEAQISQMCSSRVC RTELEDLVKVL YLERSEKG HC
<b>Applications</b>	Enzyme-linked Immunoabsorbent Assay

 Tel: 1-631-559-9269 1-516-512-3133

 Email: [info@creative-biomart.com](mailto:info@creative-biomart.com)  Fax: 1-631-938-8127

 45-1 Ramsey Road, Shirley, NY 11967, USA

Western Blot (Recombinant protein)  
 Antibody Production  
 Protein Array

**Storage** Store at -80 centigrade. Aliquot to avoid repeated freezing and thawing.

**Storage Buffer** 50 mM Tris-HCl, 10 mM reduced Glutathione, pH=8.0 in the elution buffer.

## GENE INFORMATION

**Gene Name** [CHRDL1 chordin-like 1 \[ Homo sapiens \]](#)

**Official Symbol** [CHRDL1](#)

**Synonyms** CHRDL1; chordin-like 1; chordin-like protein 1; CHL; NRLN1; neuralin 1; neuralin-1; ventroptin; neurogenesis-1; VOPT; dA141H5.1;

**Gene ID** [91851](#)

**mRNA Refseq** [NM\\_001143981](#)

**Protein Refseq** [NP\\_001137453](#)

**MIM** [300350](#)

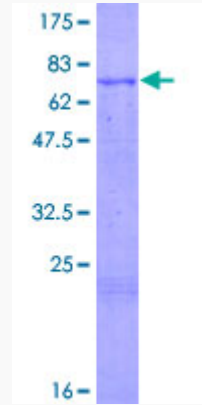
**UniProt ID** [Q9BU40](#)

 Tel: 1-631-559-9269 1-516-512-3133

 Email: [info@creative-biomart.com](mailto:info@creative-biomart.com)  Fax: 1-631-938-8127

 45-1 Ramsey Road, Shirley, NY 11967, USA

**Quality Control  
Testing**



12.5% SDS-PAGE Stained with Coomassie Blue.

 Tel: 1-631-559-9269 1-516-512-3133

 Email: [info@creative-biomart.com](mailto:info@creative-biomart.com)  Fax: 1-631-938-8127

 45-1 Ramsey Road, Shirley, NY 11967, USA