

# Recombinant Mouse CHRDL1 Protein (23-447 aa), His-Myc-tagged

**Cat. No.** CHRDL1-2749M    **Lot. No.** (See product label)

## SPECIFICATION

<b>Product Overview</b>	Recombinant Mouse CHRDL1 Protein (23-447 aa) is produced by Baculovirus expression system. This protein is fused with a 10xHis tag at the N-terminal and a Myc tag at the C-terminal. Research Area: Neuroscience. Protein Description: Full Length of Mature Protein.
<b>Species</b>	Mouse
<b>Source</b>	Insect Cells
<b>ProteinLength</b>	23-447 aa
<b>Description</b>	Seems to antagonize the function of BMP4 by binding to it and preventing its interaction with receptors. Alters the fate commitment of neural stem cells from gliogenesis to neurogenesis. Contributes to neuronal differentiation of neural stem cells in the brain by preventing the adoption of a glial fate. May play a crucial role in dorsoventral axis formation. Antagonizes the function of BMP7 and may thus play an important role in the embryonic bone formation. Shows no inhibitory effect on the inducing activity of BMP2. Plays a role during anterior segment eye development.
<b>Form</b>	Tris-based buffer,50% glycerol
<b>Molecular Mass</b>	52.2 kDa
<b>AA Sequence</b>	EQVKHSPTYCVFQDKKYRVGEKWHPYLEPYGLVYCVNCICSENGNVLCSSRVRCPSS

 Tel: 1-631-559-9269    1-516-512-3133

 Email: [info@creative-biomart.com](mailto:info@creative-biomart.com)     Fax: 1-631-938-8127

 45-1 Ramsey Road, Shirley, NY 11967, USA



LHCLSPVHIPHLCCPRCPDSLPPVNNKVTSKSCEYNGTTYQHGEFLIAEGLFQNRQP  
 NQCSQCSCSEGNVYCGLKTCPKLTCAFPVSVPDSCCRVCRGDAELSWEHADGDIF  
 RQPANREARHSYLRSYDPPPNRQAGGLPRFPGSRSHRGAVIDSQQASGTIVQIVI  
 NNNKHKGQVCVSNKTYSHGESWHPNLRAGFIVECVLCTCNVTKQECKKIHCNPR  
 YPCKYPQKIDGKCKVCPEEPPSQNFDSKGSFCGEETMPVYESVFMEDGETTRKV  
 ALETERPPQVEVHVWTIQKILQHFHIEKISKRMFGELHHFKLVTRTTLNQWKLFTEG  
 EAQLSQMCSSQVCRTELEDLVQVLYLGRPEKDHC

**Purity** > 85% as determined by SDS-PAGE.

**Notes** Repeated freezing and thawing is not recommended. Store working aliquots at 4 centigrade for up to one week.

**Storage** The shelf life is related to many factors, storage state, buffer ingredients, storage temperature and the stability of the protein itself. Generally, the shelf life of liquid form is 6 months at -20 centigrade/-80 centigrade. The shelf life of lyophilized form is 12 months at -20 centigrade/-80 centigrade.

**Concentration** A hardcopy of COA will be sent along with the products. Please refer to it for detailed information.

## GENE INFORMATION

**Gene Name** [Chrdl1 chordin-like 1 \[ Mus musculus \]](#)

**Official Symbol** [CHRDL1](#)

**Synonyms** CHRDL1; chordin-like 1; neuralin-1; neurogenesin-1; ventroptin-beta; ventroptin-alpha; CHL; CHL1; VOPT; Nrln1;

**Gene ID** [83453](#)

Tel: 1-631-559-9269 1-516-512-3133

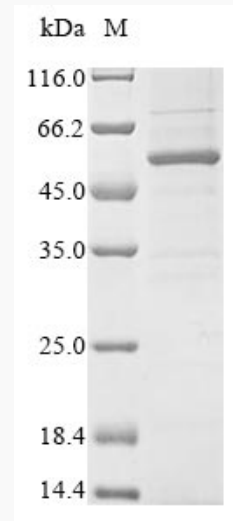
Email: [info@creative-biomart.com](mailto:info@creative-biomart.com) Fax: 1-631-938-8127

45-1 Ramsey Road, Shirley, NY 11967, USA

mRNA Refseq [NM\\_001114385](#)

Protein Refseq [NP\\_001107857](#)

UniProt ID [Q920C1](#)



(Tris-Glycine gel) Discontinuous SDS-PAGE (reduced) with 5% enrichment gel and 15% separation gel.

 Tel: 1-631-559-9269 1-516-512-3133

 Email: [info@creative-biomart.com](mailto:info@creative-biomart.com)  Fax: 1-631-938-8127

 45-1 Ramsey Road, Shirley, NY 11967, USA