

Active Recombinant Human CHRDL1 protein, His-tagged

Cat. No. CHRDL1-30H Lot. No. (See product label)

SPECIFICATION

Product Overview	Recombinant Human CHRDL1 protein(Q9BU40-1)(Glu28-Cys456) is expressed from E.coli with His tag at the N-terminal.
Species	Human
Source	E.coli
ProteinLength	Glu28-Cys456
Form	Supplied as 0.22µm filtered solution in 4mM HCl (pH 4.0). Please dilute to the desired concentration according to the concentration of the solution shown on the product label.
Bio-activity	Immobilized Human CHRDL1, His Tag at 1µg/ml (100µl/Well) on the plate. Dose response curve for Anti-CHRDL1 Antibody, hFc Tag with the EC50 of 33.8ng/ml determined by ELISA.
Molecular Mass	The protein has a predicted MW of 50 kDa same as Tris-Bis PAGE result.
Endotoxin	Less than 1EU per µg by the LAL method.
Purity	> 95% as determined by Tris-Bis PAGE
Storage	Valid for 12 months from date of receipt when stored at -80°C. Recommend to aliquot the protein into smaller quantities for optimal storage. Please

 Tel: 1-631-559-9269 1-516-512-3133

 Email: info@creative-biomart.com  Fax: 1-631-938-8127

 45-1 Ramsey Road, Shirley, NY 11967, USA

do not repeated freeze-thaw cycles.

Reconstitution

It is recommended that sterile water be added to the vial to prepare a stock solution of 0.2 ug/ul. Centrifuge the vial at 4°C before opening to recover the entire contents.

GENE INFORMATION

Gene Name [CHRDL1 chordin-like 1 \[Homo sapiens \]](#)

Official Symbol [CHRDL1](#)

Synonyms

chordin-like 1; CHL; VOPT; NRLN1; dA141H5.1; CHRDL1; chordin-like protein 1; neuralin 1; neuralin-1; ventroptin; neurogenesis-1; OTTHUMP00000023853; OTTHUMP00000023854; OTTHUMP00000216338; Neurogenesis-1; Ventroptin; Neuralin-1

Gene ID [91851](#)

mRNA Refseq [NM_145234](#)

Protein Refseq [NP_660277](#)

MIM [300350](#)

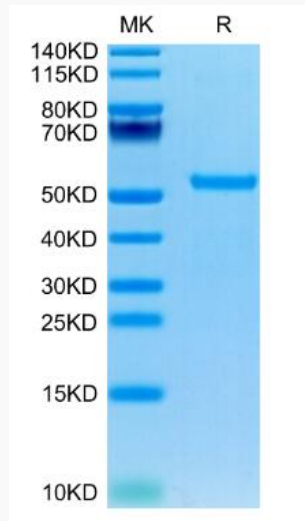
UniProt ID [Q9BU40](#)

 Tel: 1-631-559-9269 1-516-512-3133

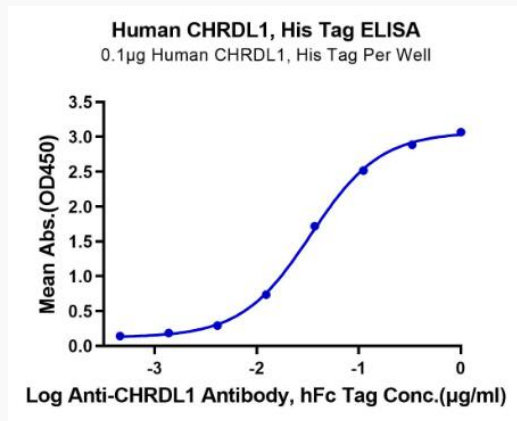
 Email: info@creative-biomart.com  Fax: 1-631-938-8127

 45-1 Ramsey Road, Shirley, NY 11967, USA

Tris-Bis PAGE



ELISA Data



 Tel: 1-631-559-9269 1-516-512-3133

 Email: info@creative-biomart.com  Fax: 1-631-938-8127

 45-1 Ramsey Road, Shirley, NY 11967, USA