

## Recombinant Human CHRDL1 protein(92-237aa), His-GST&Myc-tagged

Cat. No. CHRDL1-8202H Lot. No. (See product label)

### SPECIFICATION

<b>Product Overview</b>	Recombinant Human CHRDL1 protein(Q9BU40)(92-237aa), fused with N-terminal His and GST tag and C-terminal Myc tag, was expressed in E.coli.
<b>Species</b>	Human
<b>Source</b>	E.coli
<b>ProteinLength</b>	92-237aa
<b>Form</b>	If the delivery form is liquid, the default storage buffer is Tris/PBS-based buffer, 5%-50% glycerol. If the delivery form is lyophilized powder, the buffer before lyophilization is Tris/PBS-based buffer, 6% Trehalose, pH 8.0.
<b>Molecular Mass</b>	74.2 kDa
<b>Purity</b>	Greater than 90% as determined by SDS-PAGE.
<b>Storage</b>	Store at -20°C/-80°C upon receipt, aliquoting is necessary for multiple use. Avoid repeated freeze-thaw cycles.
<b>Reconstitution</b>	We recommend that this vial be briefly centrifuged prior to opening to bring the contents to the bottom. Please reconstitute protein in deionized sterile water to a concentration of 0.1-1.0 mg/mL. We recommend to add 5-50% of glycerol (final concentration) and aliquot for long-term storage at -20°C/-80°C.

 Tel: 1-631-559-9269 1-516-512-3133

 Email: [info@creative-biomart.com](mailto:info@creative-biomart.com)  Fax: 1-631-938-8127

 45-1 Ramsey Road, Shirley, NY 11967, USA

**AA Sequence**

PHLCCPRCPDSLPPVNNKVTSKSCEYNGTTYQHGELFVAEGLFQNRQPNQCTQCS  
 CSEGNVYCGLKTCPKLTCAFPVSVPDSCCRVCRGDGELSWEHSDGDIFRQPANRE  
 ARHSYHRSHYDPPPSRQAGGLSRFPGARSHRGALMDSQQASGTIVQIVINNKHKHG  
 QVCVSNKTYSHGESWHPNLRAFGIVECVLCTCNVTKQECKKIHCPNRYPCYPQK  
 IDGKCKVCPGKKAKELPGQSFDNKGYFCGEETMPVYESVFMEDGETTRKIALETE  
 RPPQVEVHVWTIRKGILQHFHIEKISKRMFEELPHFKLVTRTTLSQWKIFTEGEAQISQ  
 MCSSRVCRT

## GENE INFORMATION

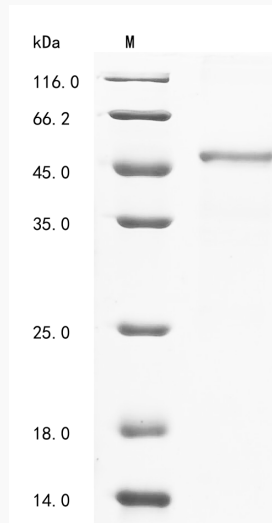
<b>Gene Name</b>	CHRDL1 chordin-like 1 [ Homo sapiens ]
<b>Official Symbol</b>	CHRDL1
<b>Synonyms</b>	CHRDL1; chordin-like 1; chordin-like protein 1; CHL; NRLN1; neuralin 1; neuralin-1; ventroptin; neurogenesis-1; VOPT; dA141H5.1;
<b>Gene ID</b>	91851
<b>mRNA Refseq</b>	NM_001143981
<b>Protein Refseq</b>	NP_001137453
<b>MIM</b>	300350
<b>UniProt ID</b>	Q9BU40

 Tel: 1-631-559-9269 1-516-512-3133

 Email: [info@creative-biomart.com](mailto:info@creative-biomart.com)
 Fax: 1-631-938-8127

 45-1 Ramsey Road, Shirley, NY 11967, USA

**SDS-PAGE**



 Tel: 1-631-559-9269 1-516-512-3133

 Email: [info@creative-biomart.com](mailto:info@creative-biomart.com)  Fax: 1-631-938-8127

 45-1 Ramsey Road, Shirley, NY 11967, USA