

# Active Recombinant Full Length Human CHRDL2 Protein, C-Flag-tagged

**Cat. No.** CHRDL2-512HFL    **Lot. No.** (See product label)

## SPECIFICATION

<b>Product Overview</b>	Recombinant Full Length Human CHRDL2 Protein, fused to Flag-tag at C-terminus, was expressed in Mammalian cells.
<b>Species</b>	Human
<b>Source</b>	Mammalian Cells
<b>Description</b>	This gene encodes a member of the chordin family of proteins. Chordin family members are secreted proteins that share a cysteine-rich pro-collagen repeat domain and associate with members of the transforming growth factor beta superfamily. In vitro assays demonstrate a direct interaction between the encoded protein and human activin A. This gene is expressed in many tissues including osteoblasts, where it is differentially expressed during differentiation. In addition, its expression is upregulated in human osteoarthritic joint cartilage, suggesting a role in adult cartilage regeneration.
<b>Form</b>	25 mM Tris HCl, pH 7.3, 100 mM glycine, 10% glycerol.
<b>Bio-activity</b>	Co-immunoprecipitation
<b>Molecular Mass</b>	49.5 kDa
<b>AA Sequence</b>	MVPEVRVLSLLGLALLWFPLDSHARARPDMFCLFHGKRYSPGESWHPYLEPQGL MYCLRCTCSEGAHVS CYRLHCPPVHCPQPVTEPQQCCPKCVEPHTPSGLRAPPK

 Tel: 1-631-559-9269    1-516-512-3133

 Email: [info@creative-biomart.com](mailto:info@creative-biomart.com)     Fax: 1-631-938-8127

 45-1 Ramsey Road, Shirley, NY 11967, USA

SCQHNGTMYQHGEIFSAHELFP SRLPNQCVL CSCTEGQIYCGLTTCPEPGCPAPLP  
 LPDSCCQACKDEASEQSDEEDSVQSLHGVRHPQDPCSSDAGRKRKRG PGTPAPTGL  
 SAPLSFIPRHFPRPKGAGSTTVKIVLKEKHKKACVHGGKTYSHGEVWHPAFRAFGPLP  
 CILC TCEDGRQDCQRVTCPT EYPCRHPKVKAGKCKICPEDKADPGHSEISSTRCP  
 KAPGRVLVHTSVSPSPDN LRRFALEHEASDLVEIYLWKLVKDEETEAQRGEVPGPR  
 PHSQNLPLDSDQESQEARLPERGTALPTARWP  
 PRRSLERLPSPDPGAEGHGQSRQSDQDITKTTRTRPLEQKLISEEDLAANDILDYKD  
 DDDKV

<b>Purity</b>	> 80% as determined by SDS-PAGE and Coomassie blue staining.
<b>Stability</b>	Stable for 12 months from the date of receipt of the product under proper storage and handling conditions. Avoid repeated freeze-thaw cycles.
<b>Storage</b>	Store at -80 centigrade.
<b>Concentration</b>	>50 ug/mL as determined by microplate BCA method.
<b>Preparation</b>	Recombinant protein was captured through anti-DDK affinity column followed by conventional chromatography steps.
<b>Protein Families</b>	Secreted Protein
<b>Full Length</b>	Full L.

## GENE INFORMATION

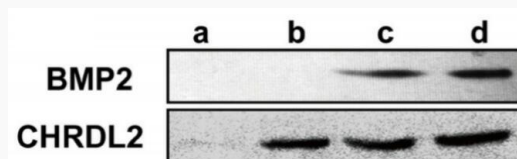
<b>Gene Name</b>	CHRDL2 chordin like 2 [ Homo sapiens (human) ]
<b>Official Symbol</b>	CHRDL2

 Tel: 1-631-559-9269 1-516-512-3133

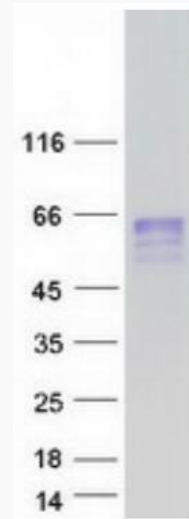
 Email: [info@creative-biomart.com](mailto:info@creative-biomart.com)  Fax: 1-631-938-8127

 45-1 Ramsey Road, Shirley, NY 11967, USA

<b>Synonyms</b>	BNF1; CHL2
<b>Gene ID</b>	25884
<b>mRNA Refseq</b>	NM_015424.6
<b>Protein Refseq</b>	NP_056239.3
<b>MIM</b>	613127
<b>UniProt ID</b>	Q6WN34



CHRDL2 binds to BMP2. Co-IP of recombinant CHRDL2 protein and recombinant BMP2 protein and analysis in Western blot with indicated antibodies. a: BMP-2 IP with anti-CHRDL2; b: CHRDL2 IP with antiCHRDL2; c: the mixture of BMP2 and CHRDL2; d: the mixture of BMP2 and CHRDL2 IP with antiCHRDL2



Coomassie blue staining of purified CHRDL2 protein.

 Tel: 1-631-559-9269 1-516-512-3133

 Email: [info@creative-biomart.com](mailto:info@creative-biomart.com)  Fax: 1-631-938-8127

 45-1 Ramsey Road, Shirley, NY 11967, USA