

Recombinant Human CHR1 protein, His-tagged

Cat. No. CHR1-6464H Lot. No. (See product label)

SPECIFICATION

Product Overview	Recombinant Human CHR1 protein(P11229)(210-366aa), fused with N-terminal His tag, was expressed in E.coli.
Species	Human
Source	E.coli
ProteinLength	210-366aa
Form	If the delivery form is liquid, the default storage buffer is Tris/PBS-based buffer, 5%-50% glycerol. If the delivery form is lyophilized powder, the buffer before lyophilization is Tris/PBS-based buffer, 6% Trehalose, pH 8.0.
Molecular Mass	20.8 kDa
Purity	Greater than 85% as determined by SDS-PAGE.
Storage	Store at -20°C/-80°C upon receipt, aliquoting is necessary for mutiple use. Avoid repeated freeze-thaw cycles.
Reconstitution	We recommend that this vial be briefly centrifuged prior to opening to bring the contents to the bottom. Please reconstitute protein in deionized sterile water to a concentration of 0.1-1.0 mg/mL. We recommend to add 5-50% of glycerol (final concentration) and aliquot for long-term storage at -20°C/-80°C.

 Tel: 1-631-559-9269 1-516-512-3133

 Email: info@creative-biomart.com  Fax: 1-631-938-8127

 45-1 Ramsey Road, Shirley, NY 11967, USA



AA Sequence

RIYRETNRARELAALQGSETPGKGGGSSSSSERSQPGAEGSPETPPGRCCRCR
APRLLQAYSWKEEEEEDEGSMESLTSSEGEPEGSEVVIKMPMVDPEAQAPTKQPP
RSSPNTVKRPTKKGRDRAGKGQKPRGKEQLAKRKTFSLVKEKKAART

GENE INFORMATION

Gene Name

CHRM1 cholinergic receptor, muscarinic 1 [Homo sapiens]

Official Symbol

CHRM1

Synonyms

CHRM1; cholinergic receptor, muscarinic 1; muscarinic acetylcholine receptor M1; acetylcholine receptor; muscarinic 1; acetylcholine receptor, muscarinic 1; M1; HM1; M1R; MGC30125;

Gene ID

1128

mRNA Refseq

NM_000738

Protein Refseq

NP_000729

MIM

118510

UniProt ID

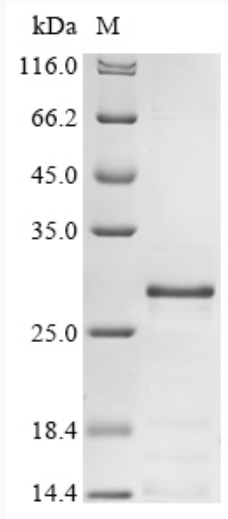
P11229

Tel: 1-631-559-9269 1-516-512-3133

Email: info@creative-biomart.com Fax: 1-631-938-8127

45-1 Ramsey Road, Shirley, NY 11967, USA

SDS-PAGE



 Tel: 1-631-559-9269 1-516-512-3133

 Email: info@creative-biomart.com  Fax: 1-631-938-8127

 45-1 Ramsey Road, Shirley, NY 11967, USA