

Recombinant Human CHRNA1 Protein (Pro256-Ile341), N-GST tagged

Cat. No. CHRNA1-1721H Lot. No. (See product label)

SPECIFICATION

Product Overview	Recombinant human CHRNA1 (Pro256-Ile341) fused with N-GST tag was expressed in E. coli.
Species	Human
Source	E.coli
ProteinLength	Pro256-Ile341
Form	Lyophilized powder/frozen liquid
Molecular Mass	36.27 kDa
Purity	>90% as determined by SDS-PAGE
Notes	For research use only.
Storage	Use a manual defrost freezer and avoid repeated freeze thaw cycles. Store at 2 to 8 centigrade for one week. Store at -20 to -80 centigrade for twelve months from the date of receipt.
Storage Buffer	0.01M PBS, pH 7.4, 0.02% NLS
Reconstitution	Reconstitute in sterile water for a stock solution.

 Tel: 1-631-559-9269 1-516-512-3133

 Email: info@creative-biomart.com  Fax: 1-631-938-8127

 45-1 Ramsey Road, Shirley, NY 11967, USA

Shipping They are shipped out with dry ice/blue ice unless customers require otherwise.

GENE INFORMATION

Gene Name [CHRNA1 cholinergic receptor, nicotinic, alpha 1 \(muscle\) \[Homo sapiens \(human\) \]](#)

Official Symbol [CHRNA1](#)

Synonyms CHRNA1; cholinergic receptor, nicotinic, alpha 1 (muscle); cholinergic receptor, nicotinic, alpha polypeptide 1 (muscle), CHRNA; acetylcholine receptor subunit alpha; acetylcholine receptor; nicotinic; alpha 1 (muscle); nicotinic cholinergic receptor alpha 1; muscle nicotinic acetylcholine receptor; nicotinic acetylcholine receptor alpha subunit; acetylcholine receptor, nicotinic, alpha 1 (muscle); cholinergic receptor, nicotinic, alpha polypeptide 1 (muscle); ACHRA; ACHRD; CHRNA; CMS2A; FCCMS; SCCMS;

Gene ID [1134](#)

mRNA Refseq [NM_000079](#)

Protein Refseq [NP_000070](#)

MIM [100690](#)

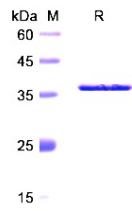
UniProt ID [P02708](#)

 Tel: 1-631-559-9269 1-516-512-3133

 Email: info@creative-biomart.com  Fax: 1-631-938-8127

 45-1 Ramsey Road, Shirley, NY 11967, USA

SDS-PAGE



 Tel: 1-631-559-9269 1-516-512-3133

 Email: info@creative-biomart.com  Fax: 1-631-938-8127

 45-1 Ramsey Road, Shirley, NY 11967, USA