

Recombinant Pacific electric ray CHRNA1 protein(25-234aa)

Cat. No. CHRNA1-292P Lot. No. (See product label)

SPECIFICATION

Product Overview	Recombinant Pacific electric ray CHRNA1 protein(P02710)(25-234aa) was expressed in E. coli.
Species	Pacific electric ray
Source	E.coli
ProteinLength	25-234aa
Form	If the delivery form is liquid, the default storage buffer is Tris/PBS-based buffer, 5%-50% glycerol. If the delivery form is lyophilized powder, the buffer before lyophilization is Tris/PBS-based buffer, 6% Trehalose, pH 8.0.
Molecular Mass	24.9 kDa
Purity	Greater than 90% as determined by SDS-PAGE.
Storage	Store at -20°C/-80°C upon receipt, aliquoting is necessary for mutiple use. Avoid repeated freeze-thaw cycles.
Reconstitution	We recommend that this vial be briefly centrifuged prior to opening to bring the contents to the bottom. Please reconstitute protein in deionized sterile water to a concentration of 0.1-1.0 mg/mL. We recommend to add 5-50% of glycerol (final concentration) and aliquot for long-term storage at -20°C/-80°C.

 Tel: 1-631-559-9269 1-516-512-3133

 Email: info@creative-biomart.com  Fax: 1-631-938-8127

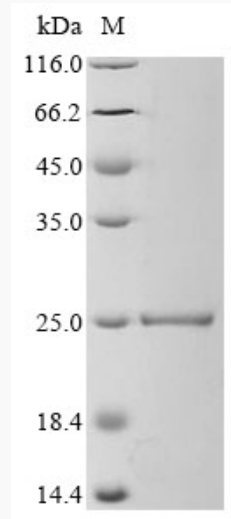
 45-1 Ramsey Road, Shirley, NY 11967, USA



AA Sequence

SEHETRLVANLLENYNKVIRPVEHHTHFVDITVGLQLIQLISVDEVNQIVETNVRLRQQ
WIDVRLRWNPADYGGIKKIRLPSDDVWLPDLVLYNNADGDFAIHMTKLLLDYTGKI
MWTPPAIFKSYCEIIVTHFPFDQQNCTMKLGIWTYDGTKVSI SPESDRPDLSTFMES
GEWVMKDYRGWKHWVYYTCCPDTPYLDITYHFIMQRI

SDS-PAGE



Tel: 1-631-559-9269 1-516-512-3133

Email: info@creative-biomart.com Fax: 1-631-938-8127

45-1 Ramsey Road, Shirley, NY 11967, USA