

Recombinant Mouse CHRNA1 Protein (21-230 aa), His-SUMO-tagged

Cat. No. CHRNA1-406M **Lot. No.** (See product label)

SPECIFICATION

Product Overview	Recombinant Mouse CHRNA1 Protein (21-230 aa) is produced by E. coli expression system. This protein is fused with a 6xHis-SUMO tag at the N-terminal. Protein Description: Partial.
Species	Mouse
Source	E.coli
ProteinLength	21-230 aa
Description	After binding acetylcholine, the AChR responds by an extensive change in conformation that affects all subunits and leads to opening of an ion-conducting channel across the plasma mbrane.
Form	Tris-based buffer, 50% glycerol
Molecular Mass	40.5 kDa
AA Sequence	SEHETRLVAKLFEDYSSVVRPVEDHREIVQVTVGLQLIQLINVDEVNQIVTTNVRLLKQ QWVDYNLKWNPDYGGVKKIHIPSEKIWRPDVVLNNADGDFAIKFTKVLLDYTGH ITWTPPAIFKSYCEIIVTHFPFDEQNCMKLGTWTYDGSVVAINPESDQPDLNFMES GEWVIKEARGWKHWVFYSCPTTPYLDITYHFVMQRL
Purity	> 90% as determined by SDS-PAGE.

 Tel: 1-631-559-9269 1-516-512-3133

 Email: info@creative-biomart.com  Fax: 1-631-938-8127

 45-1 Ramsey Road, Shirley, NY 11967, USA

Notes	Repeated freezing and thawing is not recommended. Store working aliquots at 4 centigrade for up to one week.
Storage	The shelf life is related to many factors, storage state, buffer ingredients, storage temperature and the stability of the protein itself. Generally, the shelf life of liquid form is 6 months at -20 centigrade/-80 centigrade. The shelf life of lyophilized form is 12 months at -20 centigrade/-80 centigrade.
Concentration	A hardcopy of COA with concentration instruction is sent along with the products.

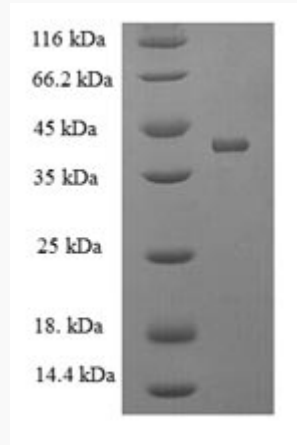
GENE INFORMATION

Gene Name	Chrna1 cholinergic receptor, nicotinic, alpha polypeptide 1 (muscle) [Mus musculus]
Official Symbol	CHRNA1
Synonyms	CHRNA1; Acra; Achr-1; AI385656; AI608266;
Gene ID	11435
mRNA Refseq	NM_007389
Protein Refseq	NP_031415
UniProt ID	P04756

 Tel: 1-631-559-9269 1-516-512-3133

 Email: info@creative-biomart.com  Fax: 1-631-938-8127

 45-1 Ramsey Road, Shirley, NY 11967, USA



(Tris-Glycine gel) Discontinuous SDS-PAGE (reduced) with 5% enrichment gel and 15% separation gel.

 Tel: 1-631-559-9269 1-516-512-3133

 Email: info@creative-biomart.com  Fax: 1-631-938-8127

 45-1 Ramsey Road, Shirley, NY 11967, USA