

Recombinant Human CHRNA2 Protein, Myc/DDK-tagged, C13 and N15-labeled

Cat. No. CHRNA2-1163H **Lot. No.** (See product label)

SPECIFICATION

Product Overview	CHRNA2 MS Standard C13 and N15-labeled recombinant protein (NP_000733) with a C-terminal MYC/DDK tag, was expressed in HEK293 cells.
Species	Human
Source	HEK293
Description	<p>Nicotinic acetylcholine receptors (nAChRs) are ligand-gated ion channels formed by a pentameric arrangement of alpha and beta subunits to create distinct muscle and neuronal receptors. Neuronal receptors are found throughout the peripheral and central nervous system where they are involved in fast synaptic transmission. This gene encodes an alpha subunit that is widely expressed in the brain. The proposed structure for nAChR subunits is a conserved N-terminal extracellular domain followed by three conserved transmembrane domains, a variable cytoplasmic loop, a fourth conserved transmembrane domain, and a short C-terminal extracellular region. Mutations in this gene cause autosomal dominant nocturnal frontal lobe epilepsy type 4. Single nucleotide polymorphisms (SNPs) in this gene have been associated with nicotine dependence.</p>
Molecular Mass	59.75 kDa
AA Sequence	MGPSCPVFLSFTKLSLWLLLLIPAGGEEAKRPPPRAPGDPLSSPSPTALPQGSHT ETEDRLFKHLFRGYNRWARPVPNTSDVVIVRFGLSIAQLIDVDEKNQMMTTNVWLK

 Tel: 1-631-559-9269 1-516-512-3133

 Email: info@creative-biomart.com  Fax: 1-631-938-8127

 45-1 Ramsey Road, Shirley, NY 11967, USA

QEWSDYKLRWNPADFGNITSLRVPSEMIWIPDIVLYNNADGEFAVTHMTKAHLFSTG
 TVHWVPPAIYKSSCSIDVTFFPFDDQQNCKMKFGSWTYDKAKIDLEQMEQTVDLKDY
 WESGEWAIVNATGTYNSSKKYDCCAIEYDPVTYAFVIRRLPLFYTINLIIPCLLISCLTVL
 VFYLPSDCGEKITLCISVLLSLTVFLLLITEIIPSTSLVIPLIGEYLLFTMIFVTLISIVITVFVL
 NVHHRSPSTHTMPHWVRGALLGCVPRWLLMNRPPPPVELCHPLRLKLSPSYHWLE
 SNVDAEEREVVVEEDRWACAGHVAPSVGTLC SHGHLHSGASGPKAEALLQEGEL
 LLSPHMQKALEGVHYIADHLRSEDADSSVKEDWKYVAMVIDRIFLWLFIIVCFLGTIGL
 FLPPFLAGMITRTRPLEQKLISEEDLAANDILDYKDDDDKV

Purity > 80% as determined by SDS-PAGE and Coomassie blue staining

Stability Stable for 3 months from receipt of products under proper storage and handling conditions.

Storage Store at -80 centigrade. Avoid repeated freeze-thaw cycles.

Concentration 50 µg/mL as determined by BCA

Storage Buffer 100 mM glycine, 25 mM Tris-HCl, pH 7.3.

GENE INFORMATION

Gene Name [CHRNA2 cholinergic receptor nicotinic alpha 2 subunit \[Homo sapiens \(human\) \]](#)

Official Symbol [CHRNA2](#)

Synonyms CHRNA2; cholinergic receptor, nicotinic, alpha 2 (neuronal); cholinergic receptor, nicotinic, alpha polypeptide 2 (neuronal); neuronal acetylcholine receptor subunit alpha-2; acetylcholine receptor; nicotinic; alpha 2 (neuronal); acetylcholine receptor, nicotinic, alpha 2 (neuronal);

 Tel: 1-631-559-9269 1-516-512-3133

 Email: info@creative-biomart.com  Fax: 1-631-938-8127

 45-1 Ramsey Road, Shirley, NY 11967, USA

Gene ID 1135

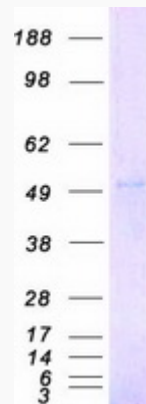
mRNA Refseq NM_000742

Protein Refseq NP_000733

MIM 118502

UniProt ID Q15822

SDS-PAGE



 Tel: 1-631-559-9269 1-516-512-3133

 Email: info@creative-biomart.com  Fax: 1-631-938-8127

 45-1 Ramsey Road, Shirley, NY 11967, USA