

Recombinant Human CHRNA5 Protein, GST-Tagged

Cat. No. CHRNA5-1282H **Lot. No.** (See product label)

SPECIFICATION

Product Overview	Human CHRNA5 partial ORF (NP_000736, 38 a.a. - 131 a.a.) recombinant protein with GST-tag at N-terminal.
Species	Human
Source	Wheat Germ
Description	The protein encoded by this gene is a nicotinic acetylcholine receptor subunit and a member of a superfamily of ligand-gated ion channels that mediate fast signal transmission at synapses. These receptors are thought to be heteropentamers composed of separate but similar subunits. Defects in this gene have been linked to susceptibility to lung cancer type 2 (LNCR2).[provided by RefSeq, Jun 2010]
Molecular Mass	36.08 kDa
AA Sequence	SEPSSIAKHEDSLLKDLFQDYERWVRPVEHLNDKIKIKFGLAISQLVDVDEKNQLMTT NVWLKQEWIDVKLRWNPDDYGGIKVIRVPSDSVWTP
Applications	Enzyme-linked Immunoabsorbent Assay Western Blot (Recombinant protein) Antibody Production Protein Array
Storage	Store at -80 centigrade. Aliquot to avoid repeated freezing and thawing.

 Tel: 1-631-559-9269 1-516-512-3133

 Email: info@creative-biomart.com  Fax: 1-631-938-8127

 45-1 Ramsey Road, Shirley, NY 11967, USA

Storage Buffer 50 mM Tris-HCl, 10 mM reduced Glutathione, pH=8.0 in the elution buffer.

GENE INFORMATION

Gene Name [CHRNA5 cholinergic receptor, nicotinic, alpha 5 \(neuronal\) \[Homo sapiens \]](#)

Official Symbol [CHRNA5](#)

Synonyms CHRNA5; cholinergic receptor, nicotinic, alpha 5 (neuronal); cholinergic receptor, nicotinic, alpha polypeptide 5; neuronal acetylcholine receptor subunit alpha-5; acetylcholine receptor; nicotinic; alpha 5 (neuronal); acetylcholine receptor, nicotinic, alpha 5 (neuronal); neuronal nicotinic acetylcholine receptor, alpha5 subunit; Cholinergic receptor, neuronal nicotinic, alpha polypeptide-5; LNCR2;

Gene ID [1138](#)

mRNA Refseq [NM_000745](#)

Protein Refseq [NP_000736](#)

MIM [118505](#)

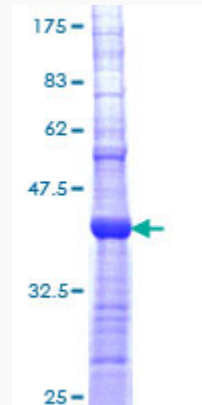
UniProt ID [P30532](#)

 Tel: 1-631-559-9269 1-516-512-3133

 Email: info@creative-biomart.com  Fax: 1-631-938-8127

 45-1 Ramsey Road, Shirley, NY 11967, USA

**Quality Control
Testing**



12.5% SDS-PAGE Stained with Coomassie Blue.

 Tel: 1-631-559-9269 1-516-512-3133

 Email: info@creative-biomart.com  Fax: 1-631-938-8127

 45-1 Ramsey Road, Shirley, NY 11967, USA