

Recombinant Human CHRN1 Protein, GST-Tagged

Cat. No. CHRN1-1285H **Lot. No.** (See product label)

SPECIFICATION

Product Overview	Human CHRN1 partial ORF (NP_000738, 24 a.a. - 128 a.a.) recombinant protein with GST-tag at N-terminal.
Species	Human
Source	Wheat Germ
Description	The muscle acetylcholine receptor is composed of five subunits: two alpha subunits and one beta, one gamma, and one delta subunit. This gene encodes the beta subunit of the acetylcholine receptor. The acetylcholine receptor changes conformation upon acetylcholine binding leading to the opening of an ion-conducting channel across the plasma membrane. Mutations in this gene are associated with slow-channel congenital myasthenic syndrome. [provided by RefSeq, Jul 2008]
Molecular Mass	37.29 kDa
AA Sequence	SEAEGRLREKLFSGYDSSVRPAREVGDRVRVSVGLILAQLISLNEKDEEMSTKVYLD LEWTDYRLSWDPAEHDGIDSLRITAESVWLPDVLLNNNDGNFDVALD
Applications	Enzyme-linked Immunoabsorbent Assay Western Blot (Recombinant protein) Antibody Production Protein Array
Storage	Store at -80 centigrade. Aliquot to avoid repeated freezing and thawing.

 Tel: 1-631-559-9269 1-516-512-3133

 Email: info@creative-biomart.com  Fax: 1-631-938-8127

 45-1 Ramsey Road, Shirley, NY 11967, USA

Storage Buffer 50 mM Tris-HCl, 10 mM reduced Glutathione, pH=8.0 in the elution buffer.

GENE INFORMATION

Gene Name [CHRNB1 cholinergic receptor, nicotinic, beta 1 \(muscle\) \[Homo sapiens \]](#)

Official Symbol [CHRNB1](#)

Synonyms CHRNB1; cholinergic receptor, nicotinic, beta 1 (muscle); cholinergic receptor, nicotinic, beta polypeptide 1 (muscle), CHRNB; acetylcholine receptor subunit beta; acetylcholine receptor; nicotinic; beta 1 (muscle); acetylcholine receptor, nicotinic, beta 1 (muscle); cholinergic receptor, nicotinic, beta polypeptide 1 (muscle); ACHRB; CHRNB; CMS1D; CMS2A; SCCMS; FLJ57107;

Gene ID [1140](#)

mRNA Refseq [NM_000747](#)

Protein Refseq [NP_000738](#)

MIM [100710](#)

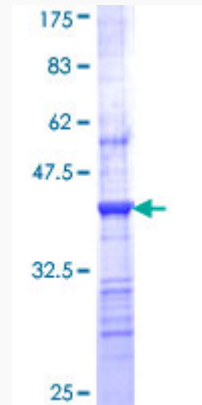
UniProt ID [P11230](#)

 Tel: 1-631-559-9269 1-516-512-3133

 Email: info@creative-biomart.com  Fax: 1-631-938-8127

 45-1 Ramsey Road, Shirley, NY 11967, USA

**Quality Control
Testing**



12.5% SDS-PAGE Stained with Coomassie Blue.

 Tel: 1-631-559-9269 1-516-512-3133

 Email: info@creative-biomart.com  Fax: 1-631-938-8127

 45-1 Ramsey Road, Shirley, NY 11967, USA