

Recombinant Human CHRNE Protein, GST-Tagged

Cat. No. CHRNE-1293H **Lot. No.** (See product label)

SPECIFICATION

Product Overview	Human CHRNE partial ORF (NP_000071, 21 a.a. - 130 a.a.) recombinant protein with GST-tag at N-terminal.
Species	Human
Source	Wheat Germ
Description	Acetylcholine receptors at mature mammalian neuromuscular junctions are pentameric protein complexes composed of four subunits in the ratio of two alpha subunits to one beta, one epsilon, and one delta subunit. The acetylcholine receptor changes subunit composition shortly after birth when the epsilon subunit replaces the gamma subunit seen in embryonic receptors. Mutations in the epsilon subunit are associated with congenital myasthenic syndrome. [provided by RefSeq, Sep 2009]
Molecular Mass	37.84 kDa
AA Sequence	KNEELRLYHHLFNNYDPGSRPVREPEDTVTISLKVTLTNLISLNEKEETLTTSVWIGID WQDYRLNYSKDDFGGIETLRVPSELVWLPEIVLENNIDGQFGVAYDANLVV
Applications	Enzyme-linked Immunoabsorbent Assay Western Blot (Recombinant protein) Antibody Production Protein Array
Storage	Store at -80 centigrade. Aliquot to avoid repeated freezing and thawing.

 Tel: 1-631-559-9269 1-516-512-3133

 Email: info@creative-biomart.com  Fax: 1-631-938-8127

 45-1 Ramsey Road, Shirley, NY 11967, USA

Storage Buffer 50 mM Tris-HCl, 10 mM reduced Glutathione, pH=8.0 in the elution buffer.

GENE INFORMATION

Gene Name CHRNE cholinergic receptor, nicotinic, epsilon (muscle) [Homo sapiens]

Official Symbol CHRNE

Synonyms CHRNE; cholinergic receptor, nicotinic, epsilon (muscle); cholinergic receptor, nicotinic, epsilon; acetylcholine receptor subunit epsilon; acetylcholine receptor; nicotinic; epsilon (muscle); ACHRE; AchR epsilon subunit; acetylcholine receptor, nicotinic, epsilon (muscle); cholinergic receptor, nicotinic, epsilon polypeptide; CMS1D; CMS1E; CMS2A; FCCMS; SCCMS;

Gene ID 1145

mRNA Refseq NM_000080

Protein Refseq NP_000071

MIM 100725

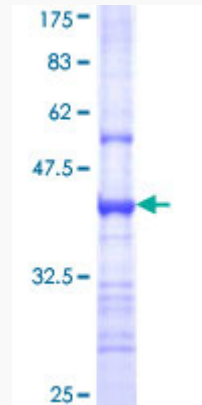
UniProt ID Q04844

 Tel: 1-631-559-9269 1-516-512-3133

 Email: info@creative-biomart.com  Fax: 1-631-938-8127

 45-1 Ramsey Road, Shirley, NY 11967, USA

**Quality Control
Testing**



12.5% SDS-PAGE Stained with Coomassie Blue.

 Tel: 1-631-559-9269 1-516-512-3133

 Email: info@creative-biomart.com  Fax: 1-631-938-8127

 45-1 Ramsey Road, Shirley, NY 11967, USA