

Recombinant Human CHRNE protein, His&Myc-tagged

Cat. No. CHRNE-5776H Lot. No. (See product label)

SPECIFICATION

Product Overview	Recombinant Human CHRNE protein(Q04844)(21-239aa), fused with N-terminal His tag and C-terminal Myc tag, was expressed in E.coli.
Species	Human
Source	E.coli
ProteinLength	21-239aa
Form	If the delivery form is liquid, the default storage buffer is Tris/PBS-based buffer, 5%-50% glycerol. If the delivery form is lyophilized powder, the buffer before lyophilization is Tris/PBS-based buffer, 6% Trehalose, pH 8.0.
Molecular Mass	32.5 kDa
Purity	Greater than 90% as determined by SDS-PAGE.
Storage	Store at -20°C/-80°C upon receipt, aliquoting is necessary for mutiple use. Avoid repeated freeze-thaw cycles.
Reconstitution	We recommend that this vial be briefly centrifuged prior to opening to bring the contents to the bottom. Please reconstitute protein in deionized sterile water to a concentration of 0.1-1.0 mg/mL. We recommend to add 5-50% of glycerol (final concentration) and aliquot for long-term storage at -20°C/-80°C.

 Tel: 1-631-559-9269 1-516-512-3133

 Email: info@creative-biomart.com  Fax: 1-631-938-8127

 45-1 Ramsey Road, Shirley, NY 11967, USA

AA Sequence

KNEELRLYHHLFNNDPGRPVREPEDTVTISLKVTLTNLISLNEKEETLTTSVWIGID
 WQDYRLNYSKDDFGGIETLRVPSELVWLPEIVLENNIDGQFGVAYDANVLVYEGGS
 VTWLPPAIYRSVCAVEVTYFPFDWQNCSLIFRSQTYNAEEVEFTFAVDNDGKTINKID
 IDTEAYTENGEWAIDFCPGVIRRHGGATDGPGETDVIYSLIIRRK

GENE INFORMATION

Gene Name [CHRNE cholinergic receptor, nicotinic, epsilon \(muscle\) \[Homo sapiens \]](#)

Official Symbol [CHRNE](#)

Synonyms CHRNE; cholinergic receptor, nicotinic, epsilon (muscle); cholinergic receptor, nicotinic, epsilon; acetylcholine receptor subunit epsilon; acetylcholine receptor; nicotinic; epsilon (muscle); ACHRE; AchR epsilon subunit; acetylcholine receptor, nicotinic, epsilon (muscle); cholinergic receptor, nicotinic, epsilon polypeptide; CMS1D; CMS1E; CMS2A; FCCMS; SCCMS;

Gene ID [1145](#)

mRNA Refseq [NM_000080](#)

Protein Refseq [NP_000071](#)

MIM [100725](#)

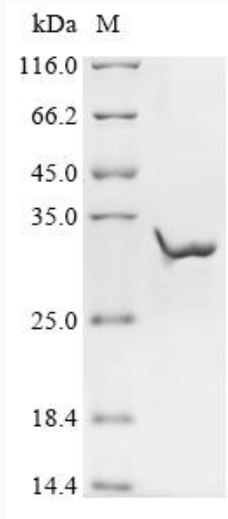
UniProt ID [Q04844](#)

 Tel: 1-631-559-9269 1-516-512-3133

 Email: info@creative-biomart.com  Fax: 1-631-938-8127

 45-1 Ramsey Road, Shirley, NY 11967, USA

SDS-PAGE



 Tel: 1-631-559-9269 1-516-512-3133

 Email: info@creative-biomart.com  Fax: 1-631-938-8127

 45-1 Ramsey Road, Shirley, NY 11967, USA