

Recombinant Human CHST1 Protein, GST-Tagged

Cat. No. CHST1-1294H Lot. No. (See product label)

SPECIFICATION

Product Overview	Human CHST1 partial ORF (NP_003645, 168 a.a. - 267 a.a.) recombinant protein with GST-tag at N-terminal.
Species	Human
Source	Wheat Germ
Description	This locus encodes a member of the keratin sulfotransferase family of proteins. The encoded enzyme catalyzes the sulfation of the proteoglycan keratin. [provided by RefSeq, Aug 2011]
Molecular Mass	36.74 kDa
AA Sequence	PPGPADLVLEEGDCVRKCGLLNLTVAEACRERSHVAIKTVRVPEVNDLRALVEDPR LNLKVIQLVRDPRGILASRSETFRDITYRLWRLWYGTGRKPYNL
Applications	Enzyme-linked Immunoabsorbent Assay Western Blot (Recombinant protein) Antibody Production Protein Array
Storage	Store at -80 centigrade. Aliquot to avoid repeated freezing and thawing.
Storage Buffer	50 mM Tris-HCl, 10 mM reduced Glutathione, pH=8.0 in the elution buffer.

 Tel: 1-631-559-9269 1-516-512-3133

 Email: info@creative-biomart.com  Fax: 1-631-938-8127

 45-1 Ramsey Road, Shirley, NY 11967, USA

GENE INFORMATION

Gene Name CHST1 carbohydrate (keratan sulfate Gal-6) sulfotransferase 1 [Homo sapiens]

Official Symbol CHST1

Synonyms CHST1; carbohydrate (keratan sulfate Gal-6) sulfotransferase 1; carbohydrate sulfotransferase 1; C6ST; KSGal6ST; carbohydrate (chondroitin 6/keratan) sulfotransferase 1; galactose/N-acetylglucosamine/N-acetylglucosamine 6-O-sulfotransferase 1; KSST; GST-1; KS6ST;

Gene ID 8534

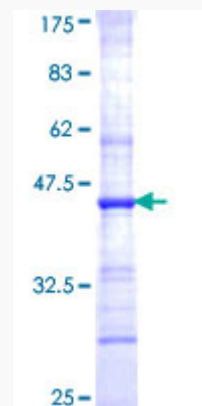
mRNA Refseq NM_003654

Protein Refseq NP_003645

MIM 603797

UniProt ID O43916

Quality Control Testing



Tel: 1-631-559-9269 1-516-512-3133

Email: info@creative-biomart.com Fax: 1-631-938-8127

45-1 Ramsey Road, Shirley, NY 11967, USA



12.5% SDS-PAGE Stained with Coomassie Blue.

 Tel: 1-631-559-9269 1-516-512-3133

 Email: info@creative-biomart.com  Fax: 1-631-938-8127

 45-1 Ramsey Road, Shirley, NY 11967, USA