

Recombinant Human CHSY1 Protein, GST-tagged

Cat. No. CHSY1-1348H Lot. No. (See product label)

SPECIFICATION

Product Overview	Human CHSY1 partial ORF (NP_055733.2, 516 a.a. - 624 a.a.) recombinant protein with GST-tag at N-terminal.
Species	Human
Source	Wheat Germ
Description	This gene encodes a member of the chondroitin N-acetylgalactosaminyltransferase family. These enzymes possess dual glucuronyltransferase and galactosaminyltransferase activity and play critical roles in the biosynthesis of chondroitin sulfate, a glycosaminoglycan involved in many biological processes including cell proliferation and morphogenesis. Decreased expression of this gene may play a role in colorectal cancer, and mutations in this gene are a cause of temtamy preaxial brachydactyly syndrome. [provided by RefSeq, Dec 2011]
Molecular Mass	37.73 kDa
AA Sequence	PFQLPGSKSEHKEPKDKKINILIPLSGRFDMFVRFMGNFEKTCLIPNQNVKLVVLLFN SDSNPDKAKQVELMRDYRIKYPKADMQLPVSGEFSRALALEVGSSQFNNE
Applications	Enzyme-linked Immunoabsorbent Assay Western Blot (Recombinant protein) Antibody Production Protein Array

 Tel: 1-631-559-9269 1-516-512-3133

 Email: info@creative-biomart.com  Fax: 1-631-938-8127

 45-1 Ramsey Road, Shirley, NY 11967, USA

Notes	Best use within three months from the date of receipt of this protein.
Storage	Store at -80 centigrade. Aliquot to avoid repeated freezing and thawing.
Storage Buffer	50 mM Tris-HCl, 10 mM reduced Glutathione, pH=8.0 in the elution buffer.
GENE INFORMATION	
Gene Name	CHSY1 chondroitin sulfate synthase 1 [Homo sapiens]
Official Symbol	CHSY1
Synonyms	CHSY1; chondroitin sulfate synthase 1; carbohydrate (chondroitin) synthase 1; CSS1; KIAA0990; chondroitin synthase 1; carbohydrate synthase 1; chondroitin glucuronyltransferase 1; N-acetylgalactosaminyltransferase II; chondroitin glucuronyltransferase II; N-acetylgalactosaminyl-proteoglycan 3-beta-glucuronosyltransferase 1; glucuronosyl-N-acetylgalactosaminyl-proteoglycan 4-beta-N-acetylgalactosaminyltransferase 1; CHSY; TPBS; ChSy-1; FLJ58581; DKFZp434M032;
Gene ID	22856
mRNA Refseq	NM_014918
Protein Refseq	NP_055733
MIM	608183
UniProt ID	Q86X52

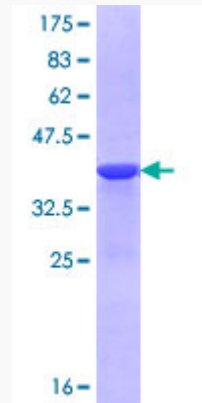
 Tel: 1-631-559-9269 1-516-512-3133

 Email: info@creative-biomart.com  Fax: 1-631-938-8127

 45-1 Ramsey Road, Shirley, NY 11967, USA

Quality Control

Testing:



12.5% SDS-PAGE Stained with Coomassie Blue.

 Tel: 1-631-559-9269 1-516-512-3133

 Email: info@creative-biomart.com  Fax: 1-631-938-8127

 45-1 Ramsey Road, Shirley, NY 11967, USA