

# Recombinant Human CHTF8 Protein, Myc/DDK-tagged, C13 and N15-labeled

Cat. No. CHTF8-3727H Lot. No. (See product label)

## SPECIFICATION

<b>Product Overview</b>	CHTF8 MS Standard C13 and N15-labeled recombinant protein (NP_001035236) with a C-terminal MYC/DDK tag, was expressed in HEK293 cells.
<b>Species</b>	Human
<b>Source</b>	HEK293
<b>Description</b>	This gene encodes a short protein that forms part of the Ctf18 replication factor C (RFC) complex that occurs in both yeast and mammals. The heteroheptameric RFC complex plays a role in sister chromatid cohesion and may load the replication clamp PCNA (proliferating cell nuclear antigen) onto DNA during DNA replication and repair. This gene is ubiquitously expressed and has been shown to have reduced expression in renal and prostate tumors. Alternatively spliced transcript variants have been described. This gene has a pseudogene on chromosome X.
<b>Molecular Mass</b>	13.3 kDa
<b>AA Sequence</b>	MVQIVISSARAGGLAEWVLMELQGEIEARYSTGLAGNLLGDLHYTTEGIPVLIVGHHIL YGKIIHLEKPFVAVLVKHTPGDQDCDELGRETGTRYLV TALIKDKILFKTRPKPIITSVPK KVTRTRPLEQKLISEEDLAANDILDYKDDDDKV
<b>Purity</b>	> 80% as determined by SDS-PAGE and Coomassie blue staining
<b>Stability</b>	Stable for 3 months from receipt of products under proper storage and handling

 Tel: 1-631-559-9269 1-516-512-3133

 Email: [info@creative-biomart.com](mailto:info@creative-biomart.com)  Fax: 1-631-938-8127

 45-1 Ramsey Road, Shirley, NY 11967, USA

conditions.

**Storage** Store at -80 centigrade. Avoid repeated freeze-thaw cycles.

**Concentration** 50 µg/mL as determined by BCA

**Storage Buffer** 100 mM glycine, 25 mM Tris-HCl, pH 7.3.

## GENE INFORMATION

**Gene Name** [CHTF8 chromosome transmission fidelity factor 8 \[ Homo sapiens \(human\) \]](#)

**Official Symbol** [CHTF8](#)

**Synonyms** CHTF8; chromosome transmission fidelity factor 8; CTF8; DERP8; chromosome transmission fidelity protein 8 homolog; CTF8, chromosome transmission fidelity factor 8 homolog; decreased expression in renal and prostate cancer protein

**Gene ID** [54921](#)

**mRNA Refseq** [NM\\_001040146](#)

**Protein Refseq** [NP\\_001035236](#)

**MIM** [613202](#)

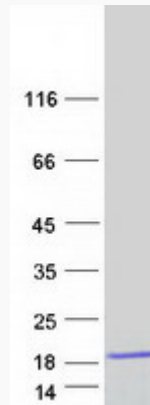
**UniProt ID** [P0CG13](#)

 Tel: 1-631-559-9269 1-516-512-3133

 Email: [info@creative-biomart.com](mailto:info@creative-biomart.com)  Fax: 1-631-938-8127

 45-1 Ramsey Road, Shirley, NY 11967, USA

SDS-PAGE



 Tel: 1-631-559-9269 1-516-512-3133

 Email: [info@creative-biomart.com](mailto:info@creative-biomart.com)  Fax: 1-631-938-8127

 45-1 Ramsey Road, Shirley, NY 11967, USA