

## Recombinant Human CHUK Protein, GST-tagged

Cat. No. CHUK-1351H Lot. No. (See product label)

### SPECIFICATION

<b>Product Overview</b>	Human CHUK partial ORF ( NP_001269, 646 a.a. - 745 a.a.) recombinant protein with GST-tag at N-terminal.
<b>Species</b>	Human
<b>Source</b>	Wheat Germ
<b>Description</b>	This gene encodes a member of the serine/threonine protein kinase family. The encoded protein, a component of a cytokine-activated protein complex that is an inhibitor of the essential transcription factor NF-kappa-B complex, phosphorylates sites that trigger the degradation of the inhibitor via the ubiquination pathway, thereby activating the transcription factor. [provided by RefSeq, Jul 2008]
<b>Molecular Mass</b>	36.63 kDa
<b>AA Sequence</b>	RQKEIWHLLKIACTQSSARSLVGSSLEGAVTPQTSAWLPPTSAEHDHSLSCVVTPQD GETSAQMIEENLNCLGHLSTIIHEANEEQGNSMMNLDWSWLTE
<b>Applications</b>	Enzyme-linked Immunoabsorbent Assay Western Blot (Recombinant protein) Antibody Production Protein Array
<b>Notes</b>	Best use within three months from the date of receipt of this protein.

 Tel: 1-631-559-9269 1-516-512-3133

 Email: [info@creative-biomart.com](mailto:info@creative-biomart.com)  Fax: 1-631-938-8127

 45-1 Ramsey Road, Shirley, NY 11967, USA

<b>Storage</b>	Store at -80 centigrade. Aliquot to avoid repeated freezing and thawing.
<b>Storage Buffer</b>	50 mM Tris-HCl, 10 mM reduced Glutathione, pH=8.0 in the elution buffer.
<b>GENE INFORMATION</b>	
<b>Gene Name</b>	CHUK conserved helix-loop-helix ubiquitous kinase [ Homo sapiens ]
<b>Official Symbol</b>	CHUK
<b>Synonyms</b>	CHUK; conserved helix-loop-helix ubiquitous kinase; TCF16; inhibitor of nuclear factor kappa-B kinase subunit alpha; IkbKA; IKK alpha; IKK1; IKKA; NFKBIKA; TCF-16; IKK-a kinase; I-kappa-B kinase 1; I-kappa-B kinase-alpha; transcription factor 16; Ikb kinase alpha subunit; Nuclear factor NFkappaB inhibitor kinase alpha; IKBKA; IKK-alpha;
<b>Gene ID</b>	1147
<b>mRNA Refseq</b>	NM_001278
<b>Protein Refseq</b>	NP_001269
<b>MIM</b>	600664
<b>UniProt ID</b>	O15111

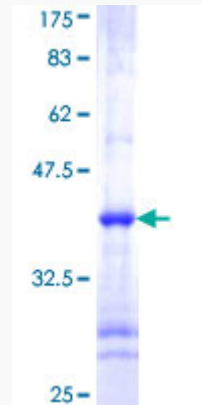
 Tel: 1-631-559-9269 1-516-512-3133

 Email: [info@creative-biomart.com](mailto:info@creative-biomart.com)  Fax: 1-631-938-8127

 45-1 Ramsey Road, Shirley, NY 11967, USA

**Quality Control**

**Testing:**



12.5% SDS-PAGE Stained with Coomassie Blue.

 Tel: 1-631-559-9269 1-516-512-3133

 Email: [info@creative-biomart.com](mailto:info@creative-biomart.com)  Fax: 1-631-938-8127

 45-1 Ramsey Road, Shirley, NY 11967, USA