

Active Recombinant Human CHUK Protein, GST-tagged

Cat. No. CHUK-5129H Lot. No. (See product label)

SPECIFICATION

Product Overview	Human CHUK (NP_001269.3, 1 a.a. - 745 a.a.) full-length recombinant protein with GST tag expressed in baculovirus infected Sf21 cells.
Species	Human
Source	Insect Cells
Description	This gene encodes a member of the serine/threonine protein kinase family. The encoded protein, a component of a cytokine-activated protein complex that is an inhibitor of the essential transcription factor NF-kappa-B complex, phosphorylates sites that trigger the degradation of the inhibitor via the ubiquination pathway, thereby activating the transcription factor. [provided by RefSeq]
Form	Liquid
Bio-activity	The activity was determined by IMAPTM assay. The enzyme was incubated with fluorescein labeled peptide and phosphorylation was detected by IMAPTM technology (fluorescence polarization). Substrate: I-kappaB-alpha peptide. ATP: 100 µM.
Molecular Mass	111 kDa
Purity	93 % by SDS-PAGE/CBB staining

 Tel: 1-631-559-9269 1-516-512-3133

 Email: info@creative-biomart.com  Fax: 1-631-938-8127

 45-1 Ramsey Road, Shirley, NY 11967, USA

Applications	Functional Study SDS-PAGE
Storage	Store at -8 centigrade. Aliquot to avoid repeated freezing and thawing.
Storage Buffer	In 50 mM Tris-HCl, 150 mM NaCl, pH 7.5 (0.1% CHAPS, 1 mM DTT, 10% glycerol)

GENE INFORMATION

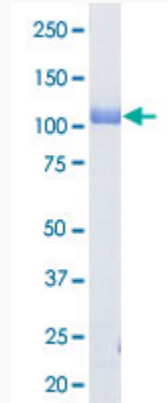
Gene Name	CHUK conserved helix-loop-helix ubiquitous kinase [Homo sapiens]
Official Symbol	CHUK
Synonyms	CHUK; conserved helix-loop-helix ubiquitous kinase; TCF16; inhibitor of nuclear factor kappa-B kinase subunit alpha; IkbKA; IKK alpha; IKK1; IKKA; NFKBIKA; TCF-16; IKK-a kinase; I-kappa-B kinase 1; I-kappa-B kinase-alpha; transcription factor 16; Ikb kinase alpha subunit; Nuclear factor NFkappaB inhibitor kinase alpha; IKBKA; IKK-alpha;
Gene ID	1147
mRNA Refseq	NM_001278
Protein Refseq	NP_001269
MIM	600664
UniProt ID	O15111

 Tel: 1-631-559-9269 1-516-512-3133

 Email: info@creative-biomart.com  Fax: 1-631-938-8127

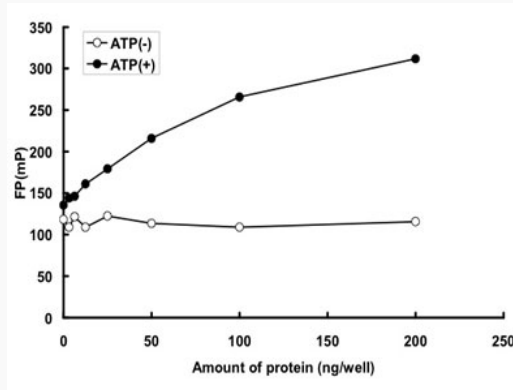
 45-1 Ramsey Road, Shirley, NY 11967, USA

**Quality Control
Testing**



Loading 1 μ g protein in SDS-PAGE

**Result of activity
analysis**



 Tel: 1-631-559-9269 1-516-512-3133

 Email: info@creative-biomart.com  Fax: 1-631-938-8127

 45-1 Ramsey Road, Shirley, NY 11967, USA