

Recombinant Human CIB1 Protein, His-tagged

Cat. No. CIB1-609H Lot. No. (See product label)

SPECIFICATION

Product Overview	Recombinant Human CIB1(Gly2~Leu191) fused with His tag at N-terminal was expressed in E. coli.
Species	Human
Source	E.coli
ProteinLength	Gly2~Leu191
Description	This gene encodes a member of the EF-hand domain-containing calcium-binding superfamily. The encoded protein interacts with many other proteins, including the platelet integrin alpha-IIb-beta-3, DNA-dependent protein kinase, presenilin-2, focal adhesion kinase, p21 activated kinase, and protein kinase D. The encoded protein may be involved in cell survival and proliferation, and is associated with several disease states including cancer and Alzheimer's disease. Alternative splicing results in multiple transcript variants.
Form	PBS, pH7.4, containing 0.01% SKL, 1mM DTT, 5% Trehalose and Proclin300.
Molecular Mass	29.0kDa
Endotoxin	<1.0EU per 1ug (determined by the LAL method)
Purity	> 95%

 Tel: 1-631-559-9269 1-516-512-3133

 Email: info@creative-biomart.com  Fax: 1-631-938-8127

 45-1 Ramsey Road, Shirley, NY 11967, USA

Applications	Positive Control; Immunogen; SDS-PAGE; WB. If bio-activity of the protein is needed, please check active protein
Stability	The thermal stability is described by the loss rate. The loss rate was determined by accelerated thermal degradation test, that is, incubate the protein at 37 centigrade for 48h, and no obvious degradation and precipitation were observed. The loss rate is less than 5% within the expiration date under appropriate storage condition.
Storage	Avoid repeated freeze/thaw cycles. Store at 2-8 centigrade for one month. Aliquot and store at -80 centigrade for 12 months.
Reconstitution	Reconstitute in PBS or others
GENE INFORMATION	
Gene Name	CIB1 calcium and integrin binding 1 (calmyrin) [Homo sapiens]
Official Symbol	CIB1
Synonyms	CIB1; calcium and integrin binding 1 (calmyrin); calcium and integrin-binding protein 1; CALMYRIN; CIB; KIP; SIP2 28; CIBP; calmyrin; kinase-interacting protein; DNA-PKcs-interacting protein; SNK-interacting protein 2-28; Snk interacting protein 2-28; calcium- and integrin-binding protein; calcium and integrin binding protein 1; DNA-dependent protein kinase interacting protein; calcium and integrin binding, protein kinase interacting protein; KIP1; SIP2-28;
Gene ID	10519
mRNA Refseq	NM_006384
Protein Refseq	NP_006375

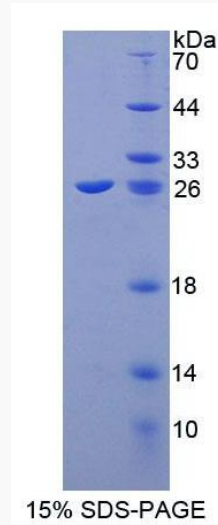
 Tel: 1-631-559-9269 1-516-512-3133

 Email: info@creative-biomart.com  Fax: 1-631-938-8127

 45-1 Ramsey Road, Shirley, NY 11967, USA

MIM 602293

UniProt ID Q99828



 Tel: 1-631-559-9269 1-516-512-3133

 Email: info@creative-biomart.com  Fax: 1-631-938-8127

 45-1 Ramsey Road, Shirley, NY 11967, USA