

Recombinant Human CIB3 Protein, GST-tagged

Cat. No. CIB3-1359H **Lot. No.** (See product label)

SPECIFICATION

Product Overview	Human CIB3 full-length ORF (AAH69428.1, 1 a.a. - 138 a.a.) recombinant protein with GST-tag at N-terminal.
Species	Human
Source	Wheat Germ
Description	This gene product shares a high degree of sequence similarity with DNA-dependent protein kinase catalytic subunit-interacting protein 2 in human and mouse, and like them may bind the catalytic subunit of DNA-dependent protein kinases. The exact function of this gene is not known. Alternative splicing results in multiple transcript variants. [provided by RefSeq, Jul 2014]
Molecular Mass	42.4 kDa
AA Sequence	MGNKQTVFTHEQLEAYQDNPFRRQRIAQVFS EDGDGHMTLDNFLDMFSVMSEMAPR DLKAYYAFKIYDFNDDYICAWDLEQTVTKL TRGELSAEEVSLVCEKVLDEADGDHD GRLSLEDFQNMILRAPDFLSTFHIRI
Applications	Enzyme-linked Immunoabsorbent Assay Western Blot (Recombinant protein) Antibody Production Protein Array
Notes	Best use within three months from the date of receipt of this protein.

 Tel: 1-631-559-9269 1-516-512-3133

 Email: info@creative-biomart.com  Fax: 1-631-938-8127

 45-1 Ramsey Road, Shirley, NY 11967, USA

Storage Store at -80 centigrade. Aliquot to avoid repeated freezing and thawing.

Storage Buffer 50 mM Tris-HCl, 10 mM reduced Glutathione, pH=8.0 in the elution buffer.

GENE INFORMATION

Gene Name CIB3 calcium and integrin binding family member 3 [Homo sapiens]

Official Symbol CIB3

Synonyms CIB3; calcium and integrin binding family member 3; calcium and integrin-binding family member 3; KIP3; KIP 3; kinase-interacting protein 3; DNA-dependent protein kinase catalytic subunit-interacting protein 3; MGC96922; MGC138405; MGC142151;

Gene ID 117286

mRNA Refseq NM_054113

Protein Refseq NP_473454

MIM 610645

UniProt ID Q96Q77

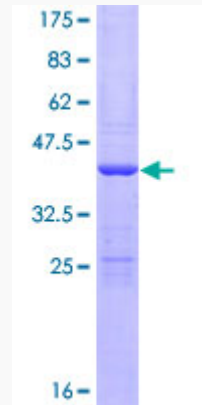
 Tel: 1-631-559-9269 1-516-512-3133

 Email: info@creative-biomart.com  Fax: 1-631-938-8127

 45-1 Ramsey Road, Shirley, NY 11967, USA

Quality Control

Testing:



12.5% SDS-PAGE Stained with Coomassie Blue.

 Tel: 1-631-559-9269 1-516-512-3133

 Email: info@creative-biomart.com  Fax: 1-631-938-8127

 45-1 Ramsey Road, Shirley, NY 11967, USA