

## Recombinant Human CIDEB Protein, GST-tagged

**Cat. No.** CIDEB-1362H    **Lot. No.** (See product label)

### SPECIFICATION

<b>Product Overview</b>	Human CIDEB full-length ORF ( AAH35970, 1 a.a. - 219 a.a.) recombinant protein with GST-tag at N-terminal.
<b>Species</b>	Human
<b>Source</b>	Wheat Germ
<b>Description</b>	CIDEB (Cell Death-Inducing DFFA-Like Effector B) is a Protein Coding gene. GO annotations related to this gene include identical protein binding. An important paralog of this gene is CIDEA.
<b>Molecular Mass</b>	49.83 kDa
<b>AA Sequence</b>	MEYLSALNPSDLLRSVSNISSEFGRRVWTSAPPPQRPFRVCDHKRTIRKGLTAATRQ ELLAKALETLLNGVLTLLVLEEDGTAVDSEDFQLLEDDTCLMVLQSGQSWSPTRSG VLSYGLGRERPKHSDIARFTFDVYKQNPDLFGSLNVKATFYGLYSMSCDFQGLG PKKVLRELLRWTSTLLQGLGHMLLGISSTLRHAVEGAEQWQQKGRLLHSY
<b>Applications</b>	Enzyme-linked Immunoabsorbent Assay Western Blot (Recombinant protein) Antibody Production Protein Array
<b>Notes</b>	Best use within three months from the date of receipt of this protein.

 Tel: 1-631-559-9269    1-516-512-3133

 Email: [info@creative-biomart.com](mailto:info@creative-biomart.com)     Fax: 1-631-938-8127

 45-1 Ramsey Road, Shirley, NY 11967, USA

**Storage** Store at -80 centigrade. Aliquot to avoid repeated freezing and thawing.

**Storage Buffer** 50 mM Tris-HCl, 10 mM reduced Glutathione, pH=8.0 in the elution buffer.

## GENE INFORMATION

**Gene Name** CIDEB cell death-inducing DFFA-like effector b [ Homo sapiens ]

**Official Symbol** CIDEB

**Synonyms** CIDEB; cell death-inducing DFFA-like effector b; cell death activator CIDE-B;

**Gene ID** 27141

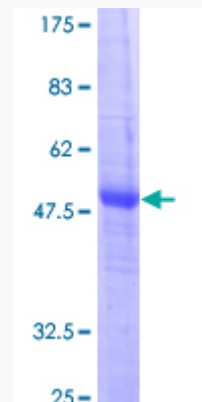
**mRNA Refseq** NM\_014430

**Protein Refseq** NP\_055245

**MIM** 604441

**UniProt ID** Q9UHD4

**Quality Control Testing:**



 Tel: 1-631-559-9269 1-516-512-3133

 Email: [info@creative-biomart.com](mailto:info@creative-biomart.com)  Fax: 1-631-938-8127

 45-1 Ramsey Road, Shirley, NY 11967, USA



12.5% SDS-PAGE Stained with Coomassie Blue.

 Tel: 1-631-559-9269 1-516-512-3133

 Email: [info@creative-biomart.com](mailto:info@creative-biomart.com)  Fax: 1-631-938-8127

 45-1 Ramsey Road, Shirley, NY 11967, USA