

Recombinant Human CIDEC Protein, GST-tagged

Cat. No. CIDEC-1365H Lot. No. (See product label)

SPECIFICATION

Product Overview	Human CIDEC full-length ORF (AAH16851, 1 a.a. - 238 a.a.) recombinant protein with GST-tag at N-terminal.
Species	Human
Source	Wheat Germ
Description	This gene encodes a member of the cell death-inducing DNA fragmentation factor-like effector family. Members of this family play important roles in apoptosis. The encoded protein promotes lipid droplet formation in adipocytes and may mediate adipocyte apoptosis. This gene is regulated by insulin and its expression is positively correlated with insulin sensitivity. Mutations in this gene may contribute to insulin resistant diabetes. A pseudogene of this gene is located on the short arm of chromosome 3. Alternatively spliced transcript variants that encode different isoforms have been observed for this gene. [provided by RefSeq, Dec 2010]
Molecular Mass	51.92 kDa
AA Sequence	MEYAMKSLSLLYPKSLSRHVSVRTSVVTQQLLSEPSPKAPRARPCRVSTADRSVRK GIMAYSLEDLLLKVRDTLMLADKPFLLVLEEDGTTVETEEYFQALAGDTVFMVLQKG QKWQPPSEQGTRHPLSLSHKPAKKIDVARVTFDLYKLNPDQFIGRLNVKATFYDTYS LSYDLHCCGAKRIMKEAFRWALFSMQATGHVLLGTSCYLQQLLDATEEGQPPKGKA SSLIPTCLKILQ
Applications	Enzyme-linked Immunoabsorbent Assay

 Tel: 1-631-559-9269 1-516-512-3133

 Email: info@creative-biomart.com  Fax: 1-631-938-8127

 45-1 Ramsey Road, Shirley, NY 11967, USA

	Western Blot (Recombinant protein) Antibody Production Protein Array
Notes	Best use within three months from the date of receipt of this protein.
Storage	Store at -80 centigrade. Aliquot to avoid repeated freezing and thawing.
Storage Buffer	50 mM Tris-HCl, 10 mM reduced Glutathione, pH=8.0 in the elution buffer.

GENE INFORMATION

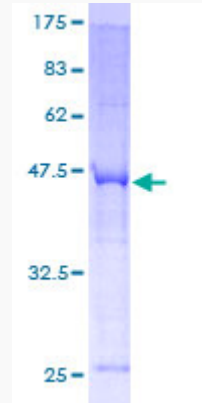
Gene Name	CIDEC cell death-inducing DFFA-like effector c [Homo sapiens]
Official Symbol	CIDEC
Synonyms	CIDEC; cell death-inducing DFFA-like effector c; cell death activator CIDE-3; CIDE 3; FLJ20871; Fsp27; fat specific protein 27; CIDE3; FSP27; CIDE-3;
Gene ID	63924
mRNA Refseq	NM_001199551
Protein Refseq	NP_001186480
MIM	612120
UniProt ID	Q96AQ7

 Tel: 1-631-559-9269 1-516-512-3133

 Email: info@creative-biomart.com  Fax: 1-631-938-8127

 45-1 Ramsey Road, Shirley, NY 11967, USA

Quality Control
Testing:



12.5% SDS-PAGE Stained with Coomassie Blue.

 Tel: 1-631-559-9269 1-516-512-3133

 Email: info@creative-biomart.com  Fax: 1-631-938-8127

 45-1 Ramsey Road, Shirley, NY 11967, USA