

Recombinant Human CIDEA Protein (Met1-Gln238), N-His tagged

Cat. No. CIDEA-2203H Lot. No. (See product label)

SPECIFICATION

Product Overview	Recombinant human CIDEA (Met1-Gln238) fused with N-His tag was expressed in E. coli.
Species	Human
Source	E.coli
ProteinLength	Met1-Gln238
Form	Lyophilized powder/frozen liquid
Molecular Mass	29.06 kDa
Purity	>90% as determined by SDS-PAGE
Notes	For research use only.
Storage	Use a manual defrost freezer and avoid repeated freeze thaw cycles. Store at 2 to 8 centigrade for one week. Store at -20 to -80 centigrade for twelve months from the date of receipt.
Storage Buffer	0.01M PBS, pH 7.4, 0.02% NLS
Reconstitution	Reconstitute in sterile water for a stock solution.

 Tel: 1-631-559-9269 1-516-512-3133

 Email: info@creative-biomart.com  Fax: 1-631-938-8127

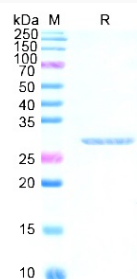
 45-1 Ramsey Road, Shirley, NY 11967, USA

Shipping

They are shipped out with dry ice/blue ice unless customers require otherwise.

GENE INFORMATION

Gene Name	CIDEC cell death-inducing DFFA-like effector c [Homo sapiens (human)]
Official Symbol	CIDEC
Synonyms	CIDEC; cell death-inducing DFFA-like effector c; cell death activator CIDE-3; CIDE 3; FLJ20871; Fsp27; fat specific protein 27; CIDE3; FSP27; CIDE-3;
Gene ID	63924
mRNA Refseq	NM_001199551
Protein Refseq	NP_001186480
MIM	612120
UniProt ID	Q96AQ7

SDS-PAGE


 Tel: 1-631-559-9269 1-516-512-3133

 Email: info@creative-biomart.com  Fax: 1-631-938-8127

 45-1 Ramsey Road, Shirley, NY 11967, USA