

Recombinant Human CILP Protein, His/GST-tagged

Cat. No. CILP-610H Lot. No. (See product label)

SPECIFICATION

| | |
|-------------------------|---|
| Product Overview | Recombinant Human CILP(Ile603~Ala846) fused with His/GST tag at N-terminal was expressed in E. coli. |
| Species | Human |
| Source | E.coli |
| ProteinLength | Ile603~Ala846 |
| Description | Major alterations in the composition of the cartilage extracellular matrix occur in joint disease, such as osteoarthritis. This gene encodes the cartilage intermediate layer protein (CILP), which increases in early osteoarthritis cartilage. The encoded protein was thought to encode a protein precursor for two different proteins; an N-terminal CILP and a C-terminal homolog of NTPPHase, however, later studies identified no nucleotide pyrophosphatase phosphodiesterase (NPP) activity. The full-length and the N-terminal domain of this protein was shown to function as an IGF-1 antagonist. An allelic variant of this gene has been associated with lumbar disc disease. |
| Form | PBS, pH7.4, containing 0.01% SKL, 1mM DTT, 5% Trehalose and Proclin300. |
| Molecular Mass | 57.6kDa |
| Endotoxin | <1.0EU per 1ug (determined by the LAL method) |
| Purity | > 95% |

 Tel: 1-631-559-9269 1-516-512-3133

 Email: info@creative-biomart.com  Fax: 1-631-938-8127

 45-1 Ramsey Road, Shirley, NY 11967, USA

| | |
|-----------------------|--|
| Applications | Positive Control; Immunogen; SDS-PAGE; WB. If bio-activity of the protein is needed, please check active protein |
| Stability | The thermal stability is described by the loss rate. The loss rate was determined by accelerated thermal degradation test, that is, incubate the protein at 37 centigrade for 48h, and no obvious degradation and precipitation were observed. The loss rate is less than 5% within the expiration date under appropriate storage condition. |
| Storage | Avoid repeated freeze/thaw cycles. Store at 2-8 centigrade for one month. Aliquot and store at -80 centigrade for 12 months. |
| Reconstitution | Reconstitute in PBS or others |

GENE INFORMATION

| | |
|------------------------|--|
| Gene Name | CILP cartilage intermediate layer protein, nucleotide pyrophosphohydrolase [Homo sapiens] |
| Official Symbol | CILP |
| Synonyms | CILP; cartilage intermediate layer protein, nucleotide pyrophosphohydrolase; cartilage intermediate layer protein 1; HsT18872; cartilage intermediate-layer protein; cartilage intermediate layer protein 1 C1; cartilage intermediate layer protein 1 C2; CILP-1; |
| Gene ID | 8483 |
| mRNA Refseq | NM_003613 |
| Protein Refseq | NP_003604 |
| MIM | 603489 |

 Tel: 1-631-559-9269 1-516-512-3133

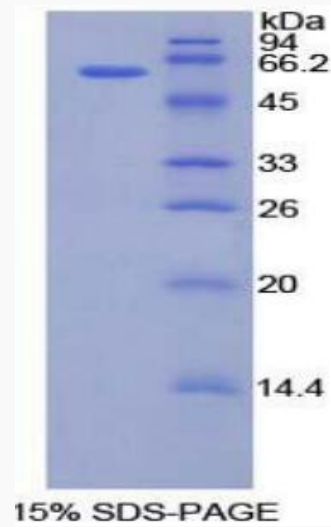
 Email: info@creative-biomart.com  Fax: 1-631-938-8127

 45-1 Ramsey Road, Shirley, NY 11967, USA



UniProt ID

O75339



Tel: 1-631-559-9269 1-516-512-3133

Email: info@creative-biomart.com Fax: 1-631-938-8127

45-1 Ramsey Road, Shirley, NY 11967, USA