

Recombinant Human CIRBP Protein, Myc/DDK-tagged, C13 and N15-labeled

Cat. No. CIRBP-4248H **Lot. No.** (See product label)

SPECIFICATION

Product Overview	CIRBP MS Standard C13 and N15-labeled recombinant protein (NP_001271) with a C-terminal MYC/DDK tag, was expressed in HEK293 cells.
Species	Human
Source	HEK293
Description	CIRBP (Cold Inducible RNA Binding Protein) is a Protein Coding gene. Diseases associated with CIRBP include Cryptorchidism, Unilateral Or Bilateral. Among its related pathways are Neuroscience and Translational Control. Gene Ontology (GO) annotations related to this gene include nucleic acid binding and nucleotide binding. An important paralog of this gene is RBMX.
Molecular Mass	18.6 kDa
AA Sequence	MASDEGKLFVGGLSFDTNEQSLEQVFSKYGQISEVVVVKDRETQRSRGFGFVTFEN IDDAKDAMMAMNGKSVDGRQIRVDQAGKSSDNRSRGYRGGSSAGGRGFFRGGRG RGRGFSRGGGDRGYGGNRFESRSGGYGGSRDYSSRSQSGGYSDRSSGGSYRD SYDSYATHNETRTRPLEQKLISEEDLAANDILDYKDDDDKV
Purity	> 80% as determined by SDS-PAGE and Coomassie blue staining
Stability	Stable for 3 months from receipt of products under proper storage and handling conditions.

 Tel: 1-631-559-9269 1-516-512-3133

 Email: info@creative-biomart.com  Fax: 1-631-938-8127

 45-1 Ramsey Road, Shirley, NY 11967, USA

Storage	Store at -80 centigrade. Avoid repeated freeze-thaw cycles.
Concentration	50 µg/mL as determined by BCA
Storage Buffer	100 mM glycine, 25 mM Tris-HCl, pH 7.3.
GENE INFORMATION	
Gene Name	CIRBP cold inducible RNA binding protein [Homo sapiens (human)]
Official Symbol	CIRBP
Synonyms	CIRBP; cold inducible RNA binding protein; cold-inducible RNA-binding protein; CIRP; Cold inducible RNA binding protein; glycine rich RNA binding protein; A18 hnRNP; glycine-rich RNA binding protein; cold inducible RNA-binding protein; glycine-rich RNA-binding protein CIRP;
Gene ID	1153
mRNA Refseq	NM_001280
Protein Refseq	NP_001271
MIM	602649
UniProt ID	Q14011

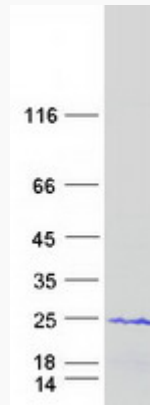
 Tel: 1-631-559-9269 1-516-512-3133

 Email: info@creative-biomart.com  Fax: 1-631-938-8127

 45-1 Ramsey Road, Shirley, NY 11967, USA



SDS-PAGE



Tel: 1-631-559-9269 1-516-512-3133

Email: info@creative-biomart.com Fax: 1-631-938-8127

45-1 Ramsey Road, Shirley, NY 11967, USA