

Recombinant Human CITED2 Protein, GST-tagged

Cat. No. CITED2-1387H **Lot. No.** (See product label)

SPECIFICATION

Product Overview	Human CITED2 full-length ORF (NP_006070.2, 1 a.a. - 270 a.a.) recombinant protein with GST-tag at N-terminal.
Species	Human
Source	Wheat Germ
Description	The protein encoded by this gene inhibits transactivation of HIF1A-induced genes by competing with binding of hypoxia-inducible factor 1-alpha to p300-CH1. Mutations in this gene are a cause of cardiac septal defects. Alternatively spliced transcript variants encoding multiple isoforms have been observed for this gene. [provided by RefSeq, May 2012]
Molecular Mass	54.9 kDa
AA Sequence	MADHMMAMNHGRFPDGTNGLHHHPAHRMGMGQFSPHHHQQQPQHAFNALM GEHIHYGAGNMNATSGIRHAMGPGTVNGGHPPSALAPAARFNNSQFMGPPVASQG GSLPASMQLQKLNNQYFNHHPYPHNHYMPDLHPAAGHQMNQTNQHFRDCNPKHS GGSSTPGGSGGSSTPGGSGSSSGGGAGSSNSGGGSGSGNMPASVAHVPAAML PNVIDTDFIDEVLMMSLVLEMGLDRIKELPELWLGQNEFDFTDFVCKQQPSRVSC
Applications	Enzyme-linked Immunoabsorbent Assay Western Blot (Recombinant protein) Antibody Production Protein Array

 Tel: 1-631-559-9269 1-516-512-3133

 Email: info@creative-biomart.com  Fax: 1-631-938-8127

 45-1 Ramsey Road, Shirley, NY 11967, USA

Notes	Best use within three months from the date of receipt of this protein.
Storage	Store at -80 centigrade. Aliquot to avoid repeated freezing and thawing.
Storage Buffer	50 mM Tris-HCl, 10 mM reduced Glutathione, pH=8.0 in the elution buffer.
GENE INFORMATION	
Gene Name	CITED2 Cbp/p300-interacting transactivator, with Glu/Asp-rich carboxy-terminal domain, 2 [Homo sapiens]
Official Symbol	CITED2
Synonyms	CITED2; Cbp/p300-interacting transactivator, with Glu/Asp-rich carboxy-terminal domain, 2; cbp/p300-interacting transactivator 2; MRG1; MRG-1; MSG1-related gene 1; MSG-related protein 1; melanocyte-specific gene 1-related gene 1; ASD8; VSD2; P35SRJ;
Gene ID	10370
mRNA Refseq	NM_001168388
Protein Refseq	NP_001161860
MIM	602937
UniProt ID	Q99967

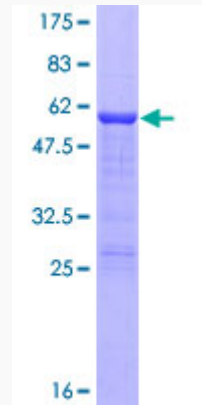
 Tel: 1-631-559-9269 1-516-512-3133

 Email: info@creative-biomart.com  Fax: 1-631-938-8127

 45-1 Ramsey Road, Shirley, NY 11967, USA

Quality Control

Testing:



12.5% SDS-PAGE Stained with Coomassie Blue.

 Tel: 1-631-559-9269 1-516-512-3133

 Email: info@creative-biomart.com  Fax: 1-631-938-8127

 45-1 Ramsey Road, Shirley, NY 11967, USA